



# Setup

🕒 Created	March 27, 2025 3:10 PM
☰ Tags	

The device has a default IP of 192.168.1.64. The Speaker needs to be activated through either IP Portal, Batch Configuration Tool, NVR/DVR online device discovery, or through the web page.

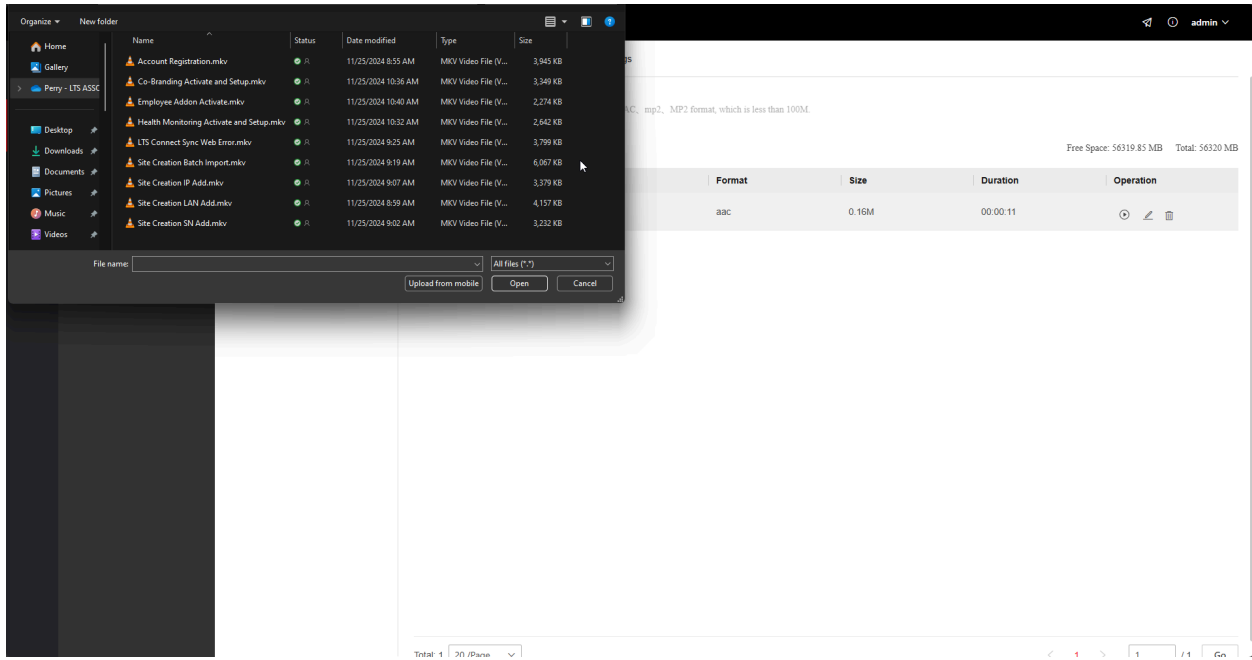
***NVMS v3 and web browser are unable to do 2-way audio as of 4/17/2026***

## Speaker Custom Audio Files

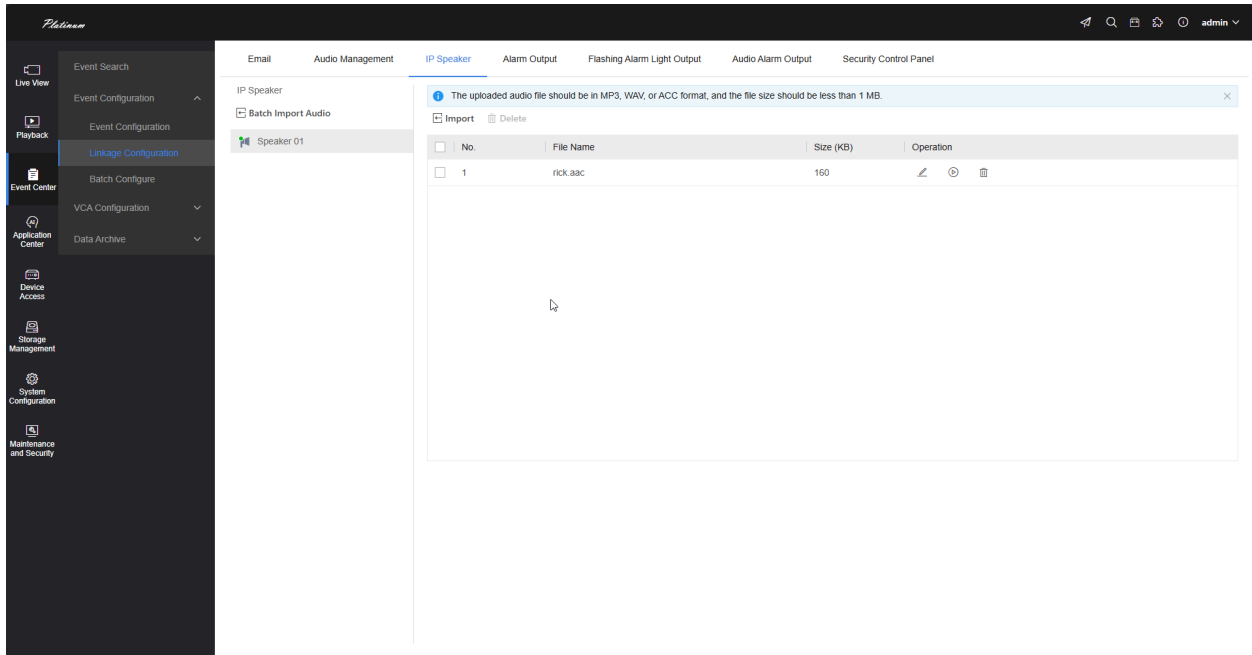
Log into the speaker directly and navigate to Configure, Broadcast Settings, and finally Material Library. Supported file types are MP3, WAV, and AAC. File size must be under 100 MB.

The screenshot displays the NVMS web interface. On the left is a dark sidebar with a 'Welcome' header and a navigation menu including Overview, System, Configure, Network, Audio, Broadcast Settings, and Alarm Configuration. The main content area is titled 'Material Library' and contains an 'Audio Library' section. Above the table, there are instructions: 'Upload audio file in mp3, MP3, wav, WAV, aac, AAC, mp2, MP2 format, which is less than 100M. mp2 and MP2 audio files do not support listening.' Below this, there are buttons for 'Batch Import' and 'Delete', and a status bar showing 'Free Space: 56319.85 MB Total: 56320 MB'. A table with the following columns is shown: No., Name, Format, Size, Duration, and Operation. The table contains one entry: No. 1, Name rick.aac, Format aac, Size 0.16M, Duration 00:00:11. The bottom of the interface shows a pagination bar with 'Total: 1' and '20 / Page'.

Click Batch Import and select all the files to import onto the speaker.

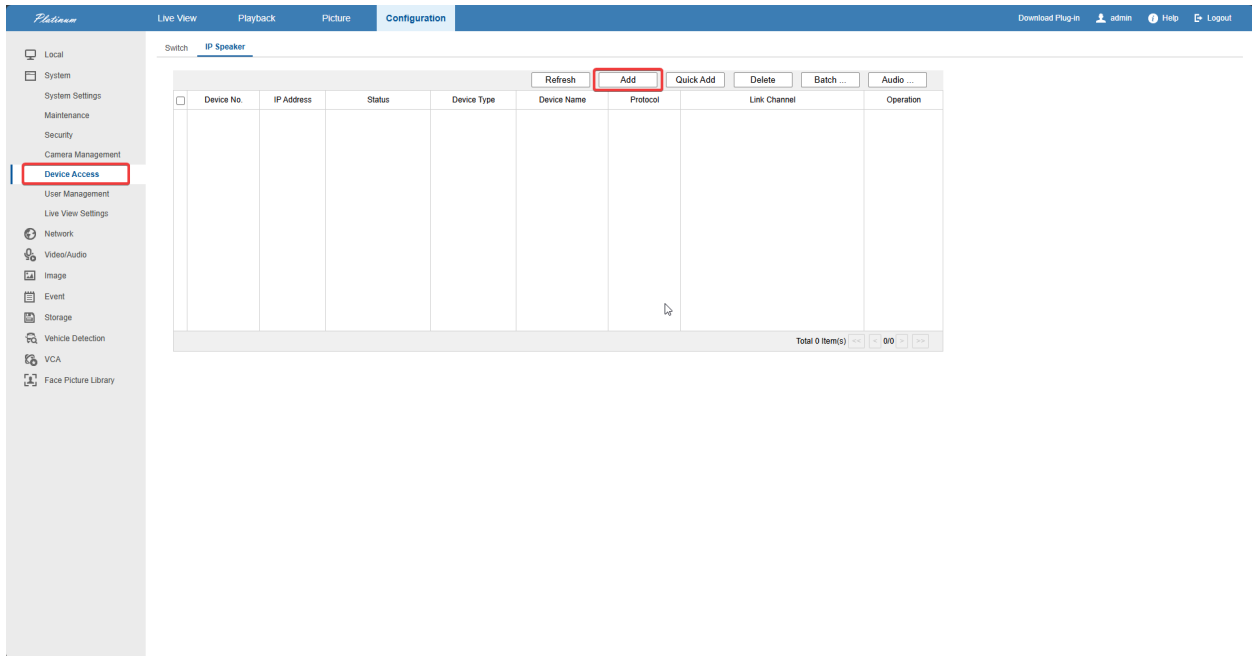


If importing from a 5.0 firmware NVR, navigate to Event Center, Linkage Configuration, and finally the IP Speaker tab. The import process is the same as with the speaker directly.

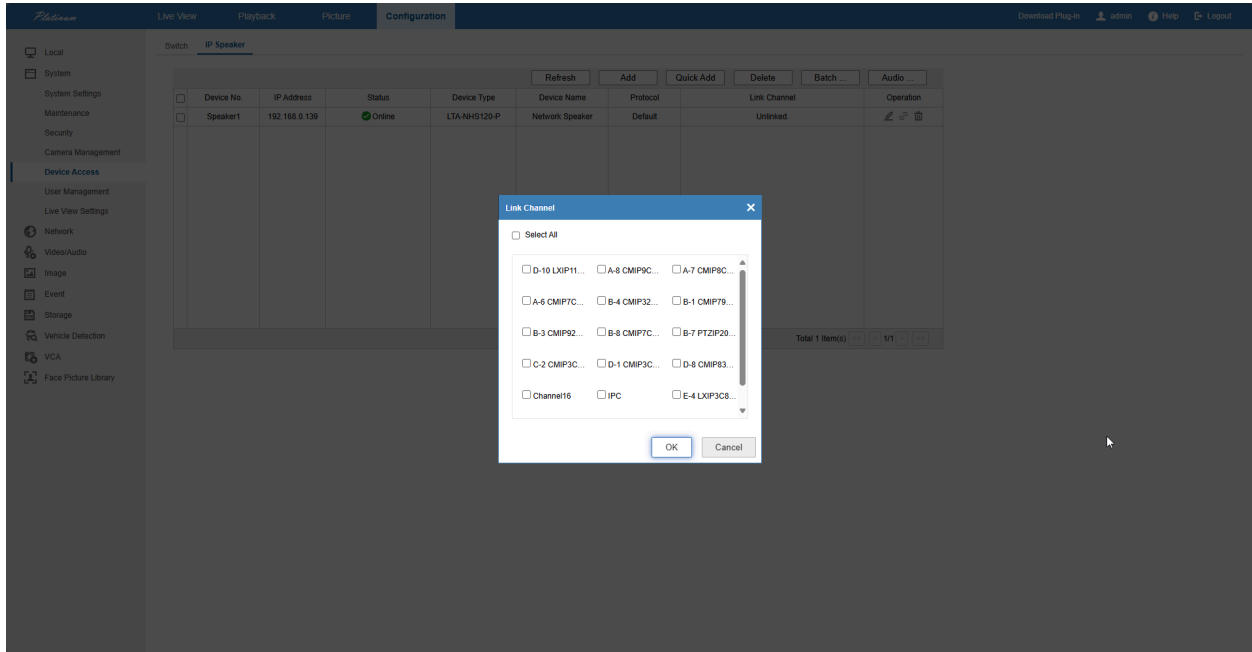


# EUI

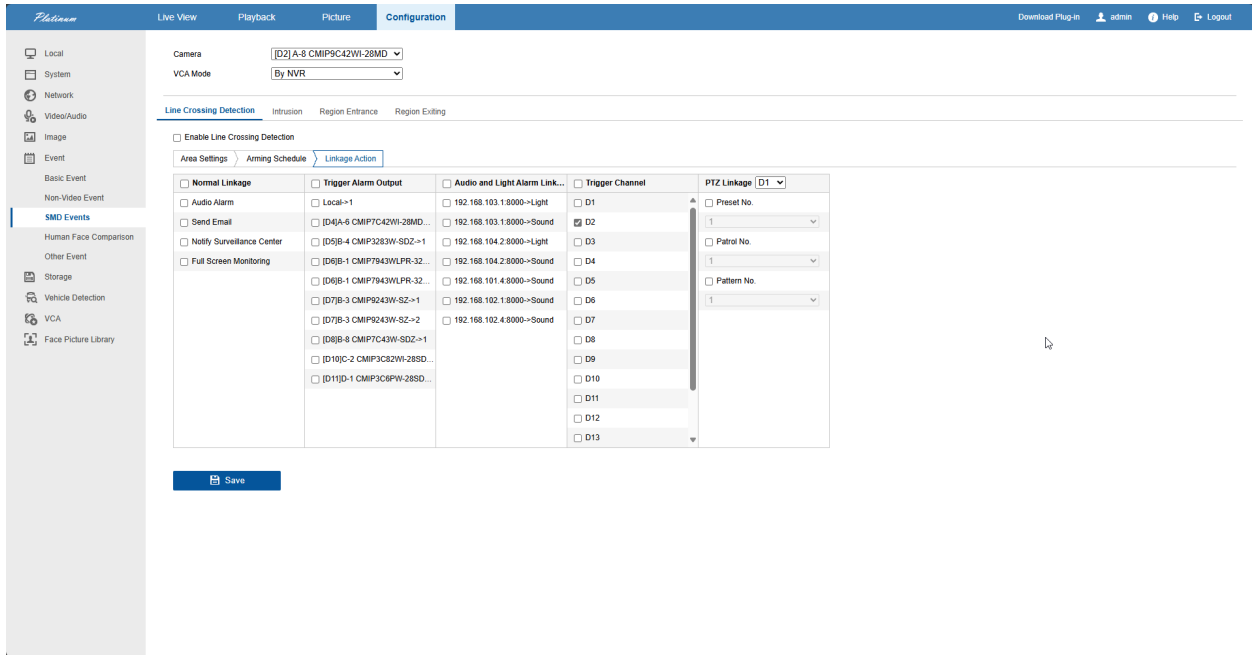
In the Device Access section of the recorder, add the Speaker under the IP Speaker tab.



For EUI firmware, after adding it will ask for channels to be linked to. The linked channel determines which cameras can do talk down capabilities through the LTS Connect app.

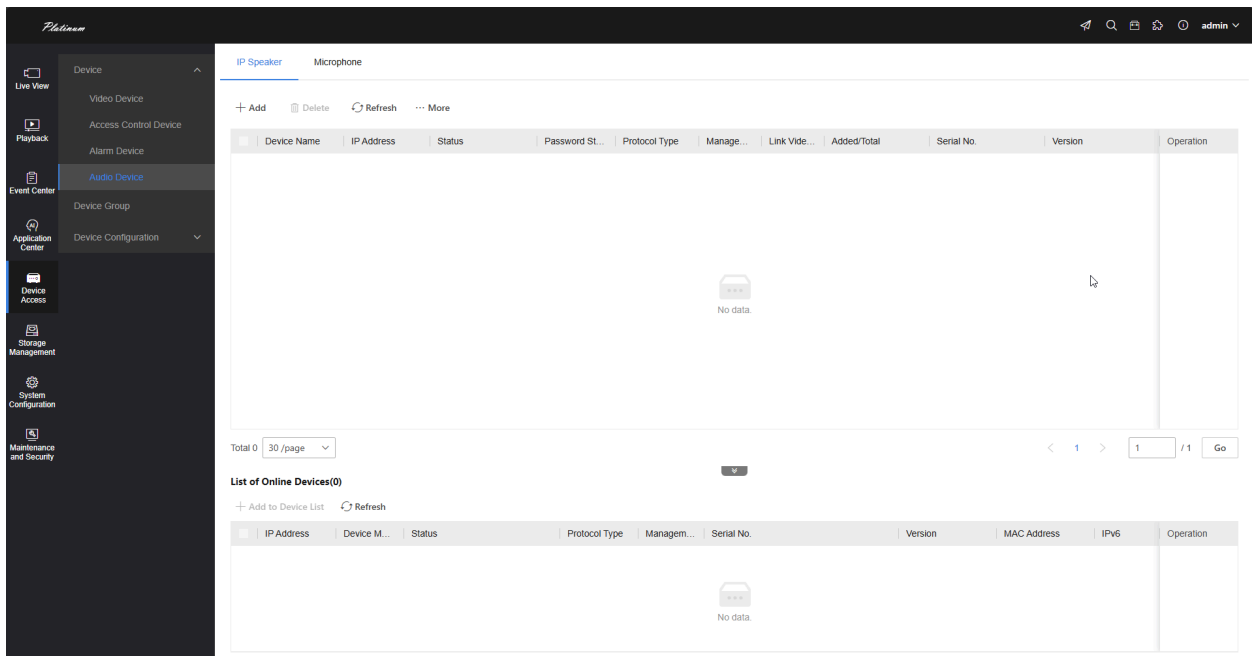


Speaker linkage is not available for all events. For example, motion detection will not allow linkage.

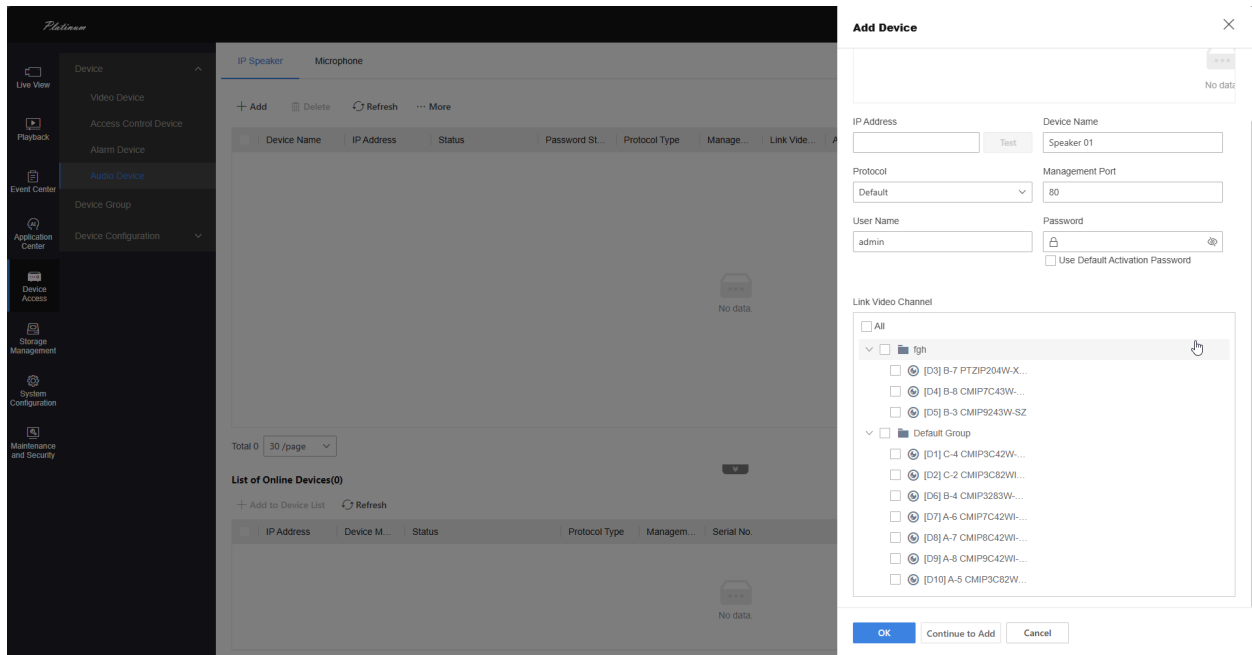


## 5.0 Firmware Setup

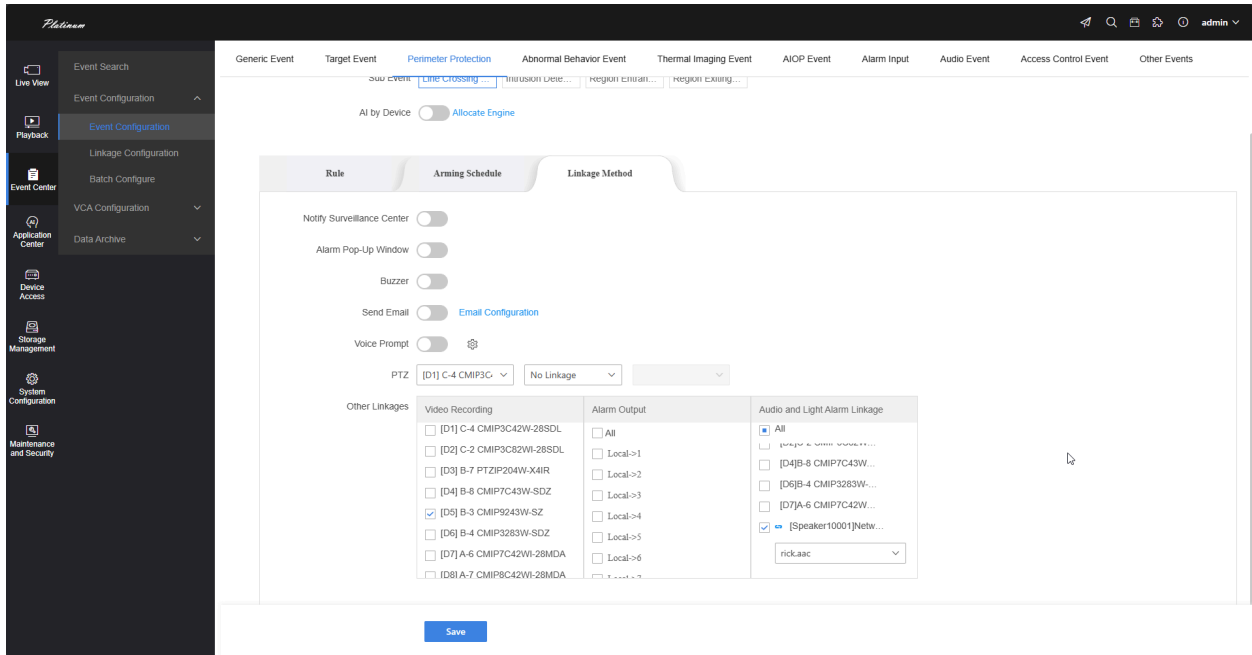
In the Device Access section of the recorder, navigate to Audio Device, and finally the IP Speaker tab.



The linking process is simultaneously done with the inputting of the IP and authentication information. The linked channel determines which cameras can do talk down capabilities through the LTS Connect app.



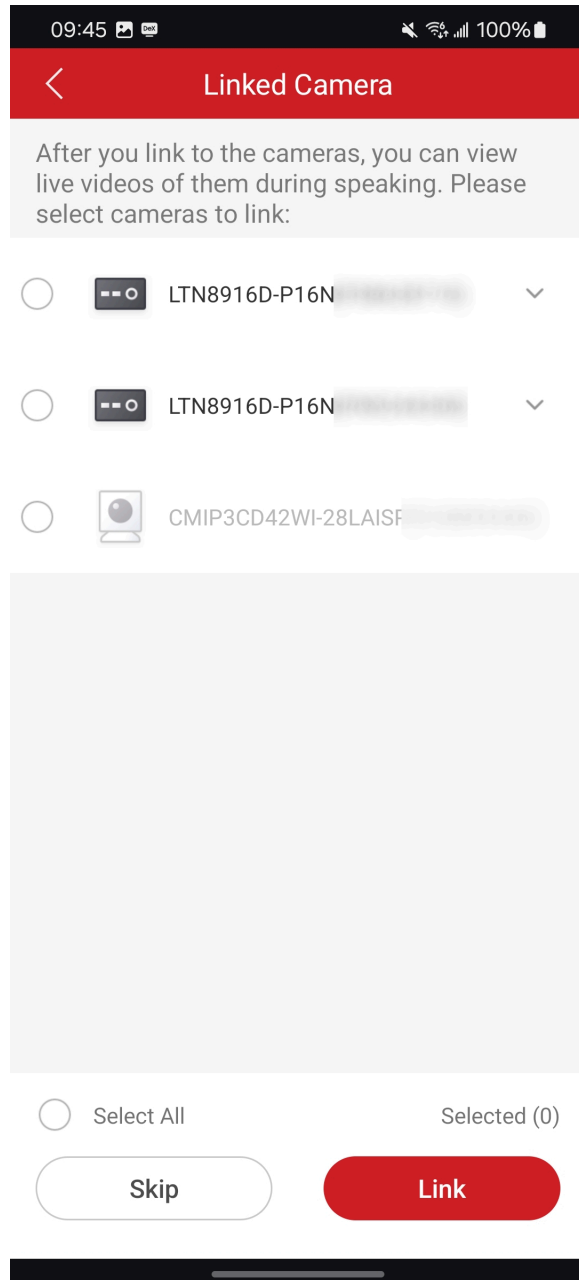
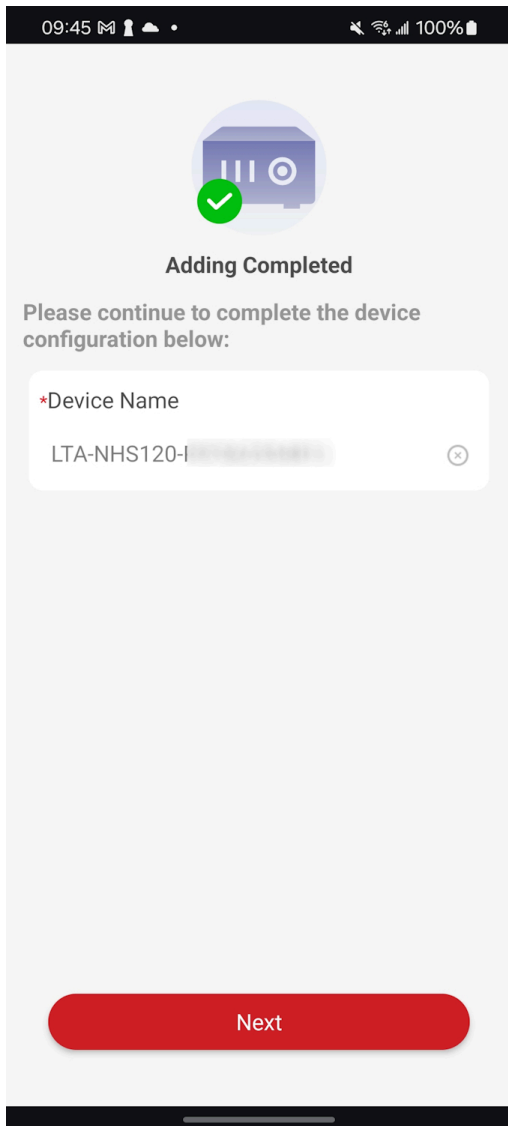
Not all events support linking to Speaker connection. If it is supported, it will be found in the bottom of the Audio and Light Alarm Linkage column.



## LTS Connect

Direct adding of the IP Speaker is possible for LTS Connect. If an NVR is not in use, then adding the IP Speaker will allow linking to the cameras that are also added into LTS Connect. This is generally not recommended as the only functionality available here is talk down.

After adding the IP speaker to LTS Connect, there will be a menu for linking to camera channels. This is purely a cosmetic effect. It will allow the camera to live view while broadcast is being done, nothing else.



To start the broadcast feature, tap on the speaker icon to the right of the speaker device.

