

The NVMSv3 Storage Server is an extra feature which come with the NVMSv3 v3.1.1 version. If you cannot find this feature, you might need to install the 3.1.1 version first then upgrade to the latest version. This software is only design for the Windows PC workstation.

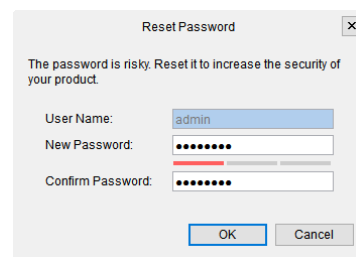
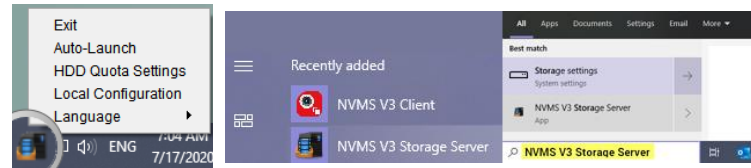
There are few reasons for the Storage Server as the record device. For example, Intercom Device, or the device does not come with the self-storage capability.

For the first time run after installed it, please launch the NVMSv3 Storage Server from the start menu. You should see the program icon in the windows system tray. (See the right corner picture)

When you run for the first time, needs to create a device password. And, make sure allow the Firewall settings as well.

**NVMSv3 Storage Server requirements:**

1. PC CPU processor minimal is Core i3 2Ghz level.
2. PC RAM minimal 8GB
3. Network Connection
4. Extra Local Hard Drive Storage Device required.  
(C: Drive or USB memory stick or Network Storage is not supported)



## Connect the Storage Server to NVMSv3

Then, Run the **NVMSv3** software. Go to the Device Management. Click Search Online Device, you should able to see it from the local network bottom section. (note: set the IP address correctly before adding it)

The screenshot shows the NVMS V3 software interface. The 'Add' dialog box is open, showing the following fields:

- Name: PC Storage Server
- IP Address: 192.0.0.250
- Port: 8000
- User Name: admin
- Password: [masked]
- Transmission Encryption:
- Synchronize Time:
- Import to Group:

Below the dialog box, a table shows the added device:

IP Address	Device Model	Firmwar...	Security ...	Port	Enhance...	Serial No.	Bo...	Added	Support ...	Guarding...	Op
192.0.0.250	STORAGE-SE...	V1.2.1bu...	Active	8000	N/A	DS-NVR-V120B20...	202...	No	N/A	N/A	

## Go to the Device Remote Configuration

Make sure it is **Online** first.

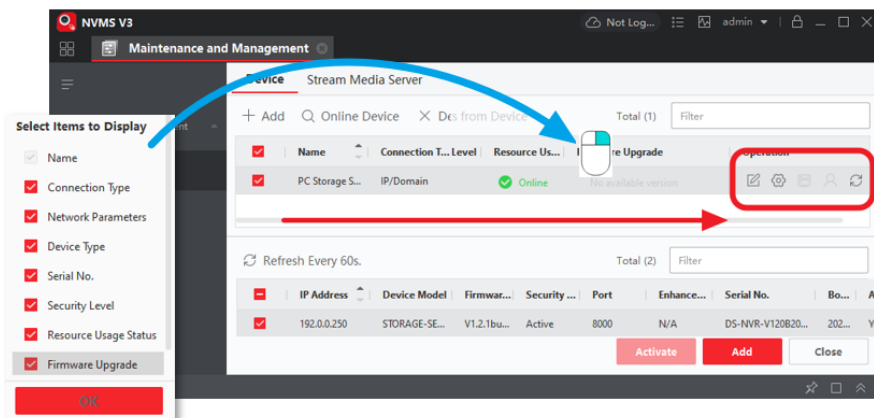
Scroll to the Right section, you should see the configuration Section.

(Tip:)

If you don't want scrolled every time to the right side to see the Config button. You may customize the column to reduce the display column length. ie: removed the Firmware Upgrade column.



Click Configure button.



## Format Storage Server HDD

Go to Storage > General. Follow the Red Dot steps.

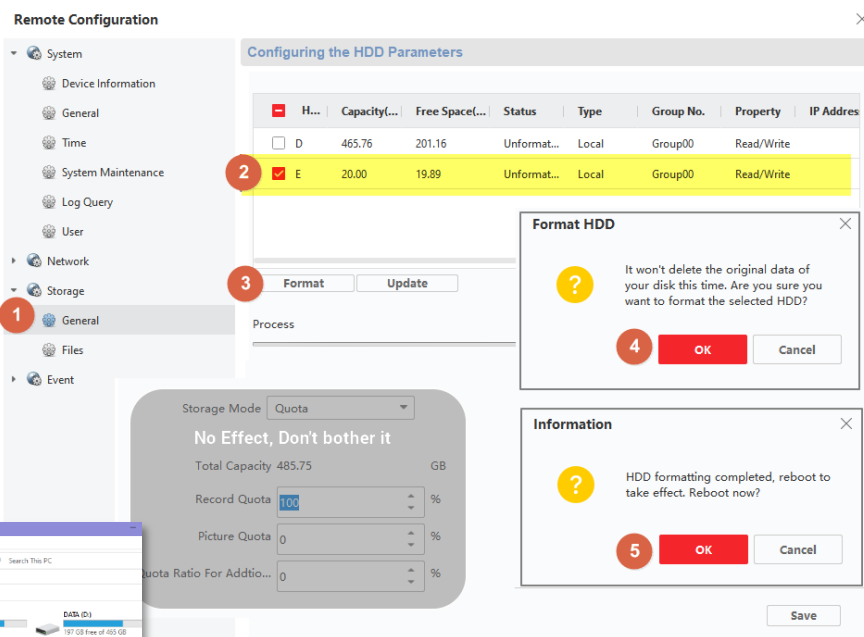
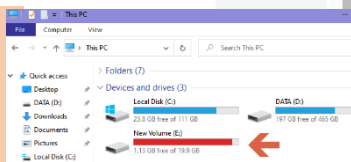
After the Storage Server reboot completely, it will show the status Normal.

H...	Capacity...	Free Space...	Status	Type	Group No.	Property
E	20.00	1.14	Normal	Local	Group00	Read/Write

### Note:

Strongly recommend use the empty HDD storage. Please don't use your regular working partition for it.

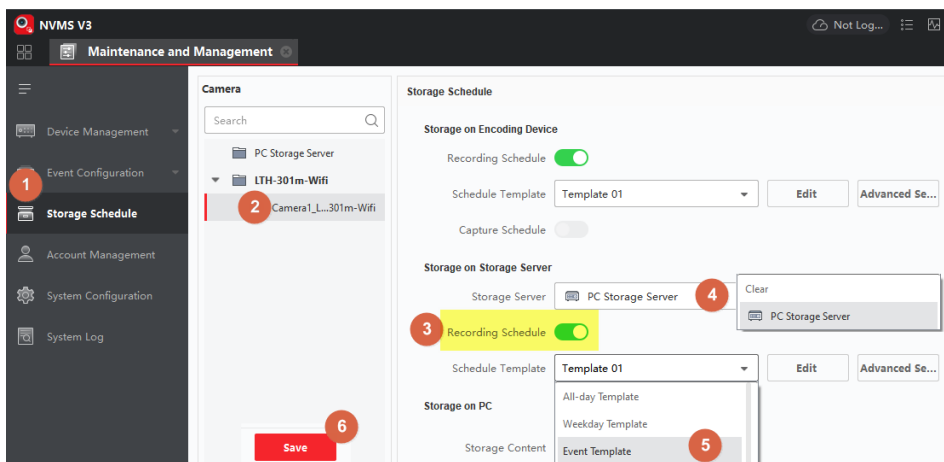
The format action will create massive files and fully occupied for the entire HDD space. There is no way to set the storage size limitation



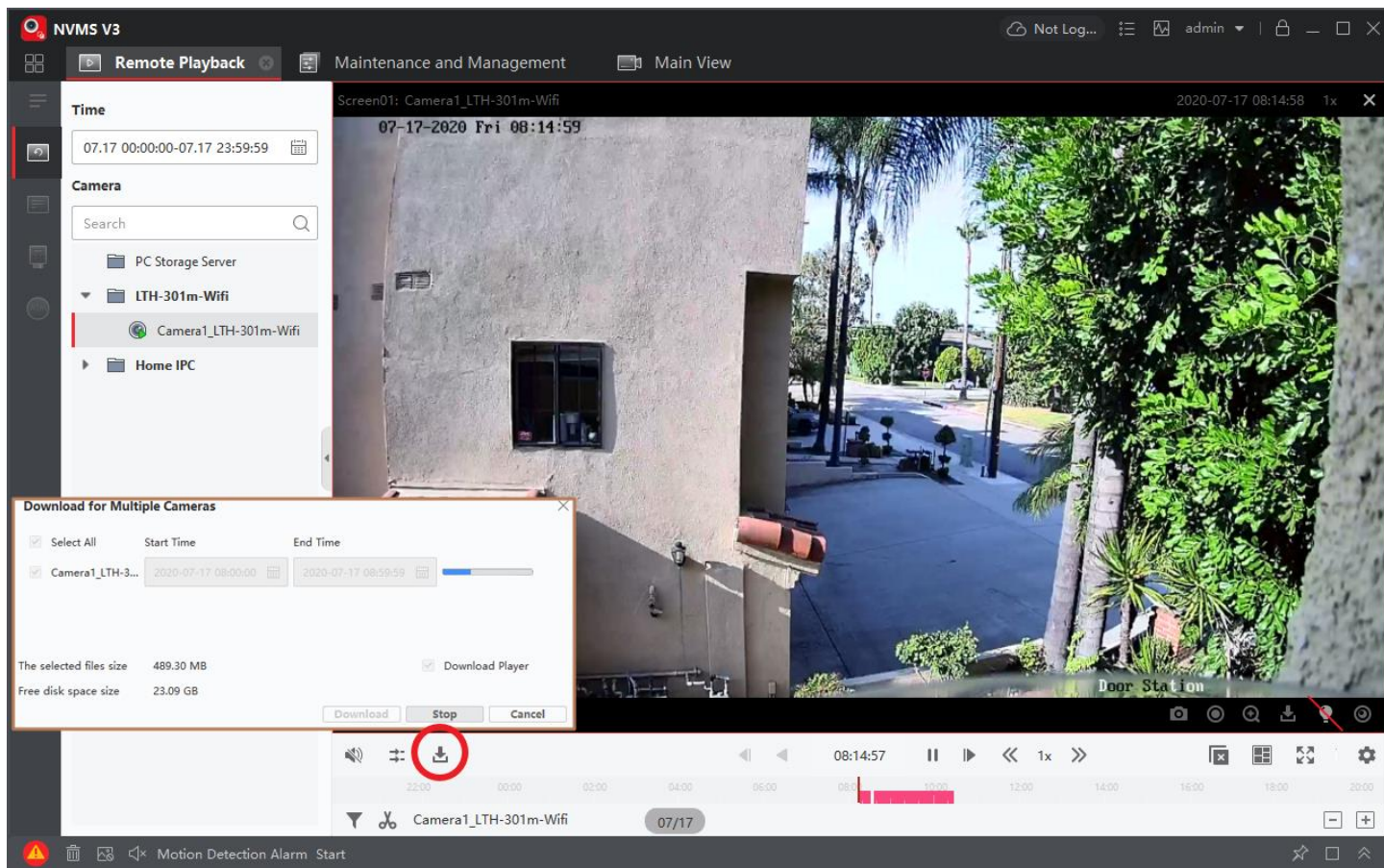
## Link Record Storage to the Device

Go to **Maintenance and Management**.


1. Select **Storage Schedule** from the side panel.
2. Select your Device from the List.
3. Enable **Recording Schedule**
4. Pick the PC Storage Server.
5. Enable Event Template. (All-day = Continuous)
6. Click **Save**, that should be it.



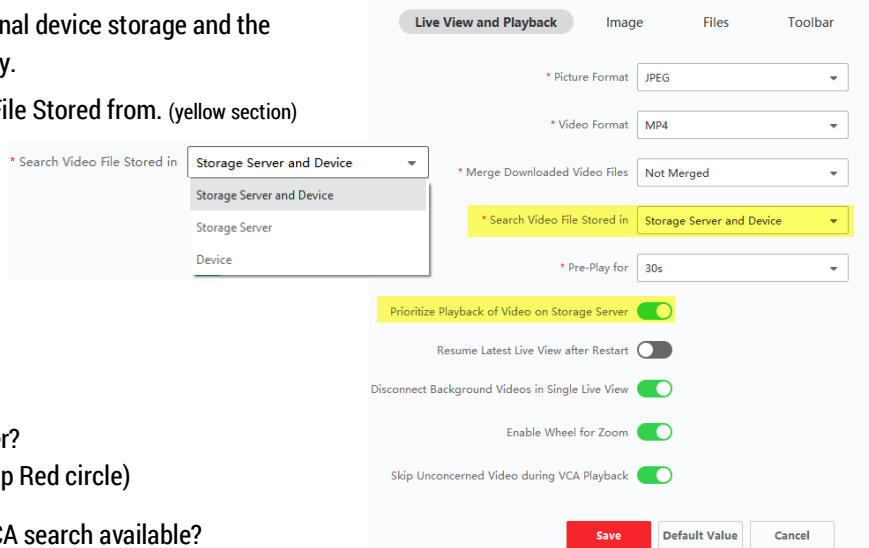
## Playback Video from the Storage Server



By default, the playback will automatically search original device storage and the storage server. You also can change the search priority.

Click the Gear icon.  Change the Search Video File Stored from. (yellow section)

Even the device is offline, but you should still able to playback from the storage server.



### FAQ:

**Q:** Can I download the video file from the storage server?

**A:** Yes, just use the Playback download button. (see top Red circle)

**Q:** What playback speed support?

**A:** up to 1x 2x 4x 8x 16x

**Q:** Is VCA search available?

**A:** no VCA search for the storage server.

**Q:** Why I can't see the storage HDD device from the Remote Configuration?

**A:** Either restart the Storage Server program should fix it or your storage device is not compatible (see 1<sup>st</sup> page yellow section)

**Q:** Is there other method to storage in hard drive without using the physical disk?

**A:** try VHD. (Virtual Hard Disk); but after PC reboot VHD will unmount; so, it is not recommended. If you like to know how, google it.

The NVMSv3 Storage Server define AS-IS condition. There is no further support information.

All other information, please check the user manual or visit the LTS support knowledge base website. <https://ltsecurityinc.zendesk.com/hc/en-us>