

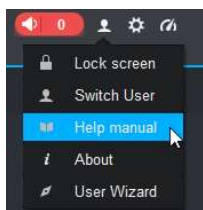
## PC App: LTS Protect

The Installation process should be standard and easy.

You need to create the login account for this App first.\*

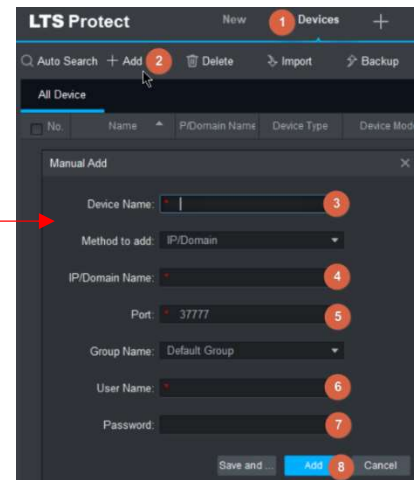
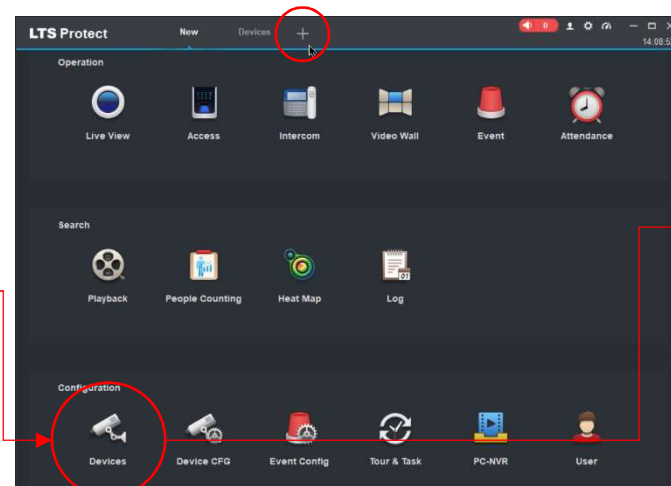
\*Please remember the Security Question when you create the Login account. LTS won't be able to help you with the password retrieval. If you forgot the password or the question, the solution is uninstall & start over.





**For more detail functions or how to operate, please check the manual**



Click + to access the Main Menu.  
Go to the **Devices**

The default port should be 37777.  
If your DVR/NVR use a different port, please check and change it.



No.	Name	IP/Domain Name	Device Type	Device Model	Port	Channel Number	Online Status	SN	Operation
1	CADemo	cademo.dvrlists....	NVR	LTN6416-P16	37	16/0/16/4	Online	858180303	   

## Live View

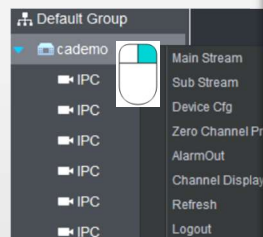
Double click from the Left panel device to display.

### MainStream/SubStream:

If you want to specify the Main Stream / Sub Stream on display.

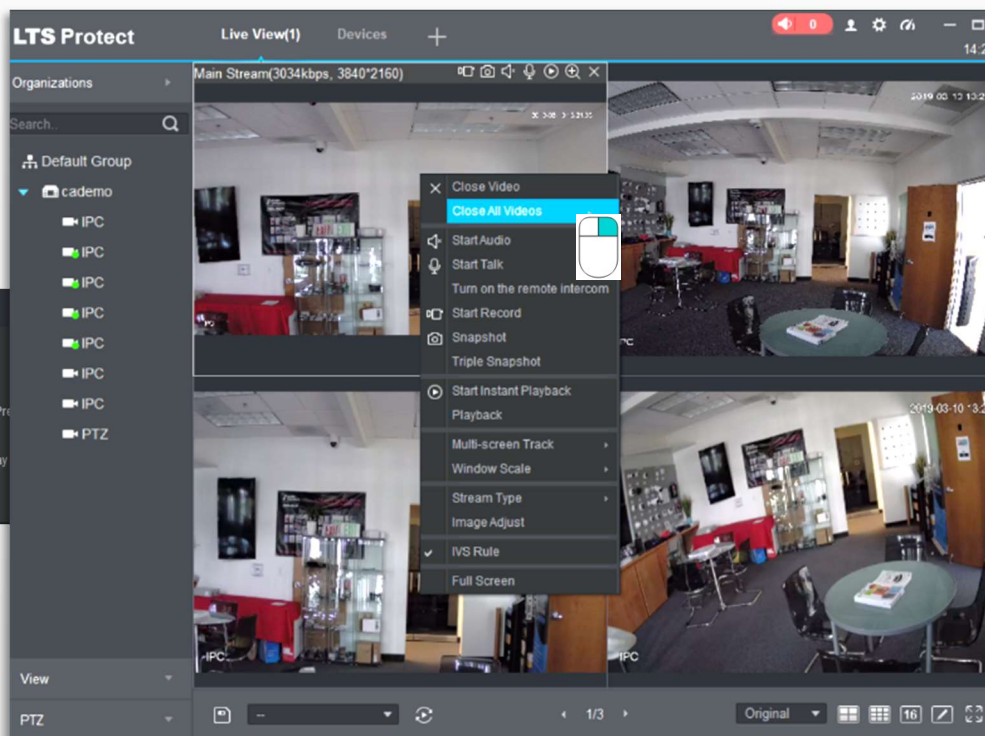
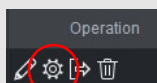
**Stop the video first.**

Then, **Right click** on the device to call the menu and **Drag & Drop** the Camera into the Window

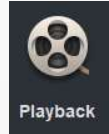


If you want to Stop All Video, Right-click on one of the videos and choose **Close All Videos**.

## Remote Configuration



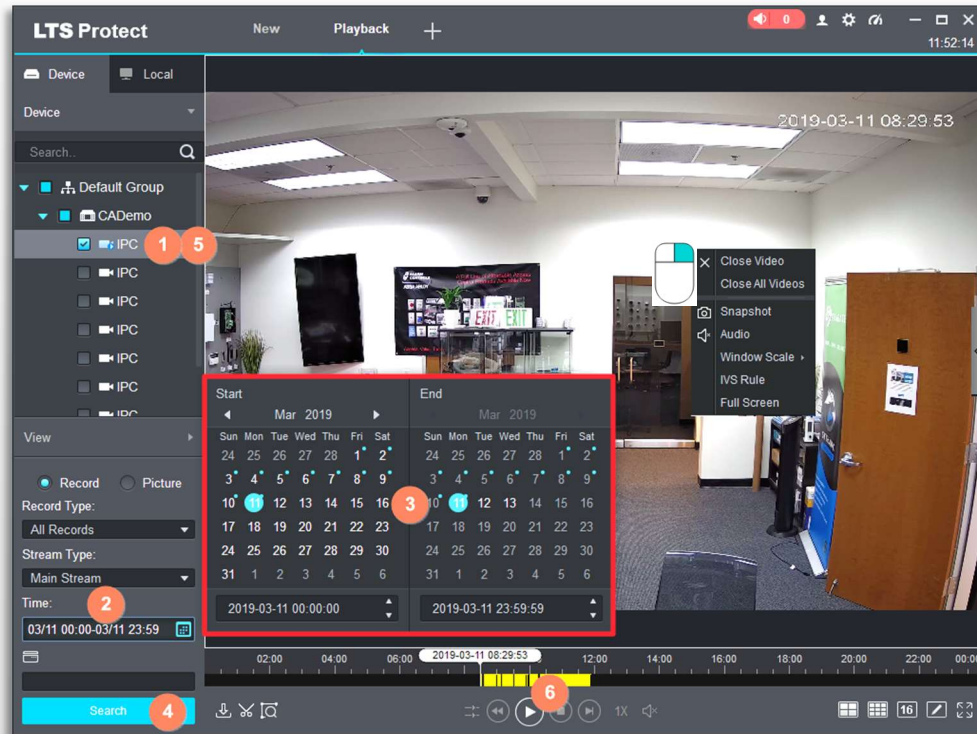
## Playback



1. Select the Camera
2. Define the Date/Time
3. Pick the Date & Time from the Calendar  
\*Note: Only blue dot contains the video
4. Click **Search**
5. Select the Camera again
6. Click the **Play** button.

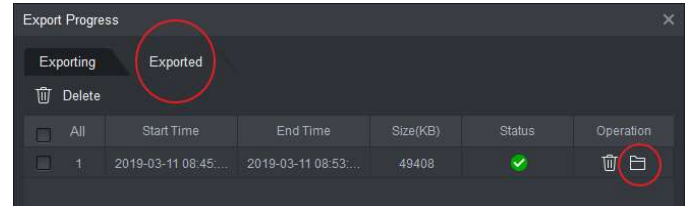
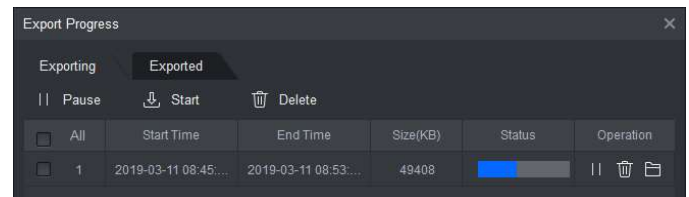
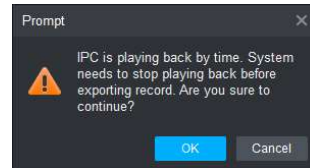
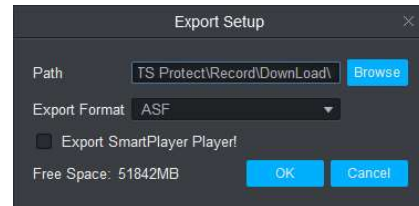
You may double click on the video, to enlarge the window to a single window size.

Right Click on the video, you should see more function in the Content Menu.



## Backup

1. Make sure the video is playing
2. Select Clip icon to define the Time Period.
3. Define the Left & Right for the time period.
4. Click the Clip icon when finished.
5. Export Setup will pop up. You can define the export location.  
The Export format support  
ASF, AVI, MP4 & Original DAV format  
Only DAV can export the SmartPlayer Lite version
6. It should prompt to stop the playing message. Click **OK** to stop.
7. Then the Export is in Progress...
8. Click the Exported tab to find your file.  
Note: DAV file size is most compact, but it requires the SmartPlayer to play the file.



The default File Path is C:\Users\Public\LTS Protect\Record\Download

## SmartPlayer Lite

The SmartPlayer Lite support the DAV file format.

