

Doorbell IP Camera Pairing Guide

LTK6128W-WIFI

Preparation:

Power up the camera, wait till its LED flickering.

Ensure your phone is connected to a 2.4GHz Wi-Fi for the camera.

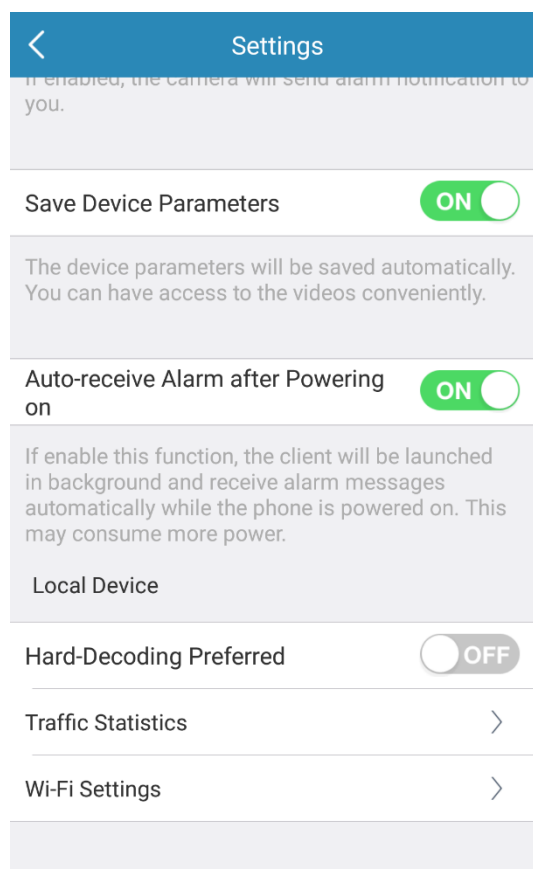
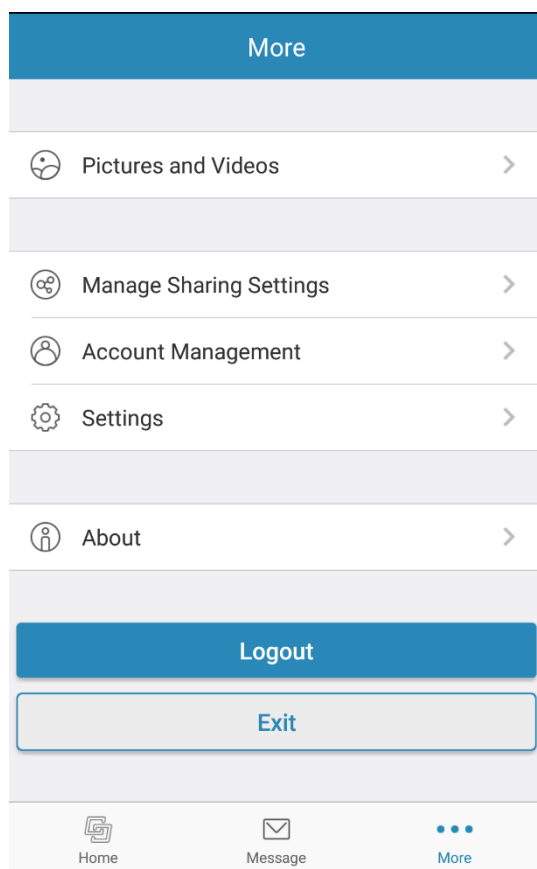
***Note: Wi-Fi 802.11 b/g works. '802.11 n only' doesn't work for now.**

Method 1: Scanning via Camera

1. Generate Wi-Fi QR Code:

In LTS Connect App

Press More → Settings → Wi-Fi Settings



Input Password → Generate

***Note: Only WPA/WPA2 Encryption works for now**

<

Wi-Fi Settings

Wi-Fi Name

Demo_2.4G

×

Password

.....


×

Encryption

WPA/WPA2

>

Generate





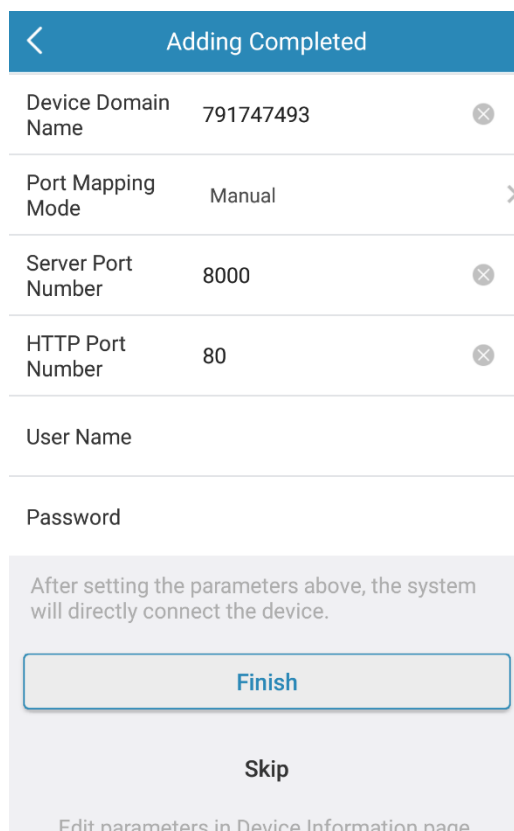
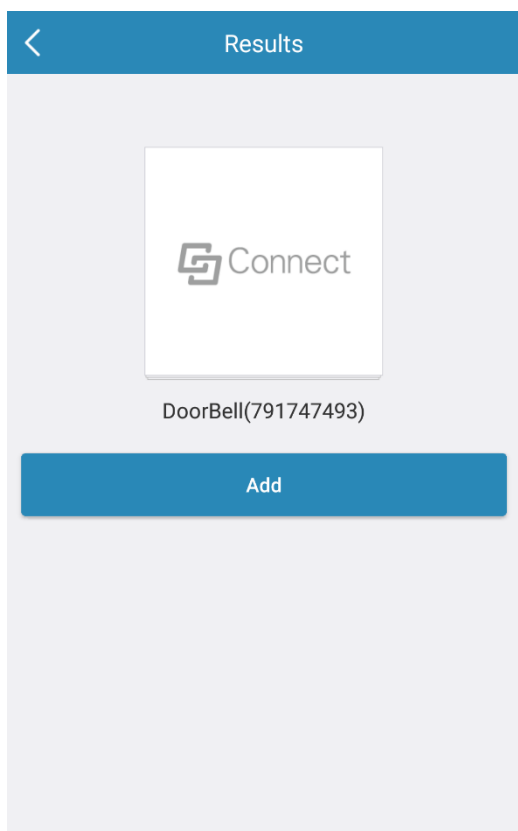
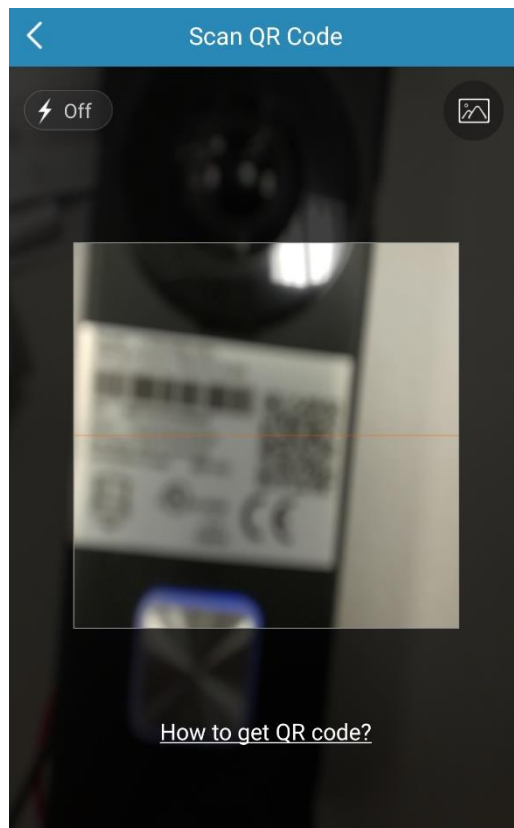
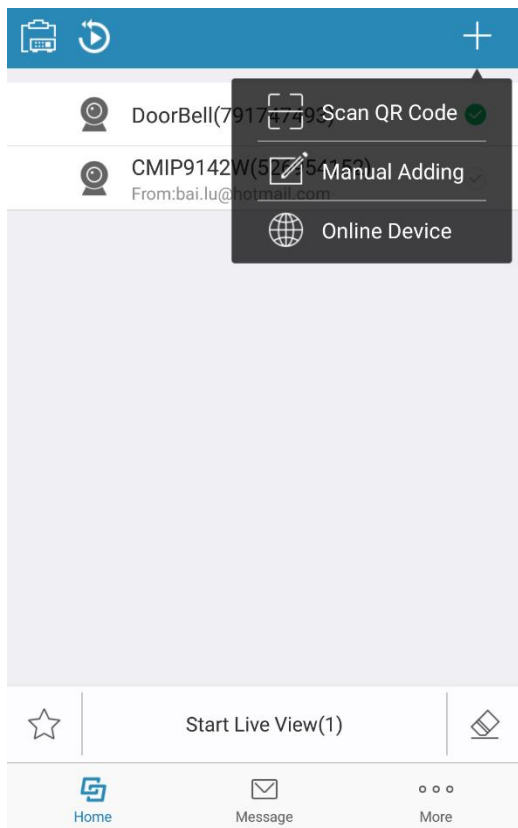
2. Scan Wi-Fi QR Code via camera:

Hold your phone about 4 inches in front of the camera for 5 seconds until it beeps.

10 seconds after the beep, the camera will say 'The Wi-Fi is connected' then 'The Server is registered'. Check Wi-Fi name, password, standard and signal strength if connection failed.

3. Add the camera to PT Cloud account:

Scan QR Code on the camera via phone to add. Hit 'Skip' in 'Adding Complete' Page.



4. Add the Doorbell to an LTS NVR:

Use a PC in the same network, activate the camera via IP Portal and follow normal IP camera adding process.

Note that camera is inactive via this method.

‘Online Device’ in LTS Connect App can tell doorbell IP address too.

The screenshot shows the 'IP Portal' web interface. At the top, it indicates 'Total number of online devices: 26'. Below this is a table listing various devices. The table has columns for ID, Device Type, Security, IPv4 Address, Port, Software Version, IPv4 Gateway, HTTP Port, and Device Serial No. Device 023, 'LTK6128W-WIFI', is highlighted in blue and marked as 'Inactive'. To the right of the table is a sidebar titled 'Activate the Device'. It features a lock icon and the text 'The device is not activated.' Below this, a blue box states 'You can modify the network parameters after the device activation.' and there is an 'Activate Now' link. At the bottom of the sidebar, there are input fields for 'New Password:' and 'Confirm Password:', followed by an 'Activate' button.

ID	Device Type	Security	IPv4 Address	Port	Software Version	IPv4 Gateway	HTTP Port	Device Serial No.
010	CMIP3352W	Active	192.168.1.11	3353	V5.4.5build 1703...	192.168.1.1	3352	CMIP3352W20170523AAWf
011	CMIP7352W-28	Active	192.168.1.4	7353	V5.4.5build 1703...	192.168.1.1	7352	CMIP7352W-2820170428A/
012	CMIP9142W	Active	192.168.1.13	9143	V5.4.0build 1702...	192.168.1.1	9142	CMIP9142W20150713BBW
013	CMIP7812W	Active	192.168.1.22	7813	V5.3.2build 1605...	192.168.1.1	7812	CMIP7812W20150815CCW
014	CMIP3022W	Active	192.168.1.8	3023	V5.4.0build 1702...	192.168.1.1	3022	CMIP3022W20150728BBWf
015	CMIP3142W-28S	Active	192.168.1.17	3143	V5.4.5build 1707...	192.168.1.1	3142	CMIP3142W-28S20160311E
016	CMIP3382W-28M	Active	192.168.1.18	3383	V5.4.5build 1703...	192.168.1.1	3382	CMIP3382W-28M20170701
017	CMIP8222W	Active	192.168.1.9	8226	V5.4.0build 1608...	192.168.1.1	8225	CMIP8222W20150813BBWf
018	CMIP7452B-M	Active	192.168.1.10	7453	V5.4.0build 1702...	192.168.1.1	7452	CMIP7452B-M20160517BBf
019	CMIP75122F-SE	Active	192.168.1.20	7513	V5.4.14build 170...	192.168.1.1	7512	CMIP75122F-SE20160308C
020	CMIP3333-Z	Active	192.168.1.23	3334	V5.1.0build 1407...	192.168.1.1	3333	CMIP3333-Z20130802CCWf
021	PTZIP212X20	Active	192.168.1.244	8000	V5.2.5build 1410...	192.168.1.1	80	PTZIP212X2020141117CCW
022	WH-CI1930-28	Active	192.168.1.21	2931	V5.3.0build 1605...	192.168.1.1	2930	WH-CI1930-2820150105CC
023	LTK6128W-WIFI	Inactive	192.168.1.230	8000	V1.4.61build 170...	192.168.1.1	80	LTK6128W-WIFI0120170804
024	DS-KB6003-IP	Active	192.168.1.221	8000	V1.4.6build 1701...	192.168.1.1	80	DS-KB6003-IP0120170121V
025	CMIP7422-M	Active	192.168.1.6	7423	V5.4.0build 1608...	192.168.1.1	7422	CMIP7422-M20160908AAWf
026	CMIP8222	Active	192.168.1.19	8223	V5.4.0build 1609...	192.168.1.1	8222	CMIP822220140618AAWR4

Method 2: Scanning via Phone

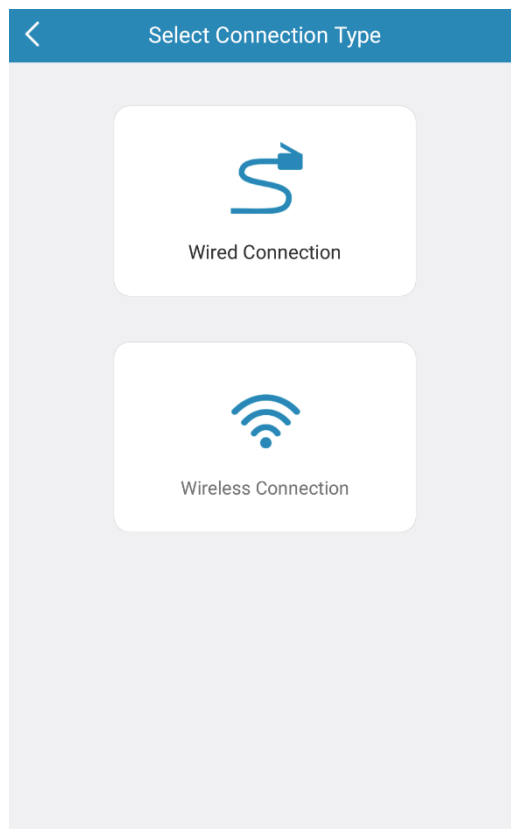
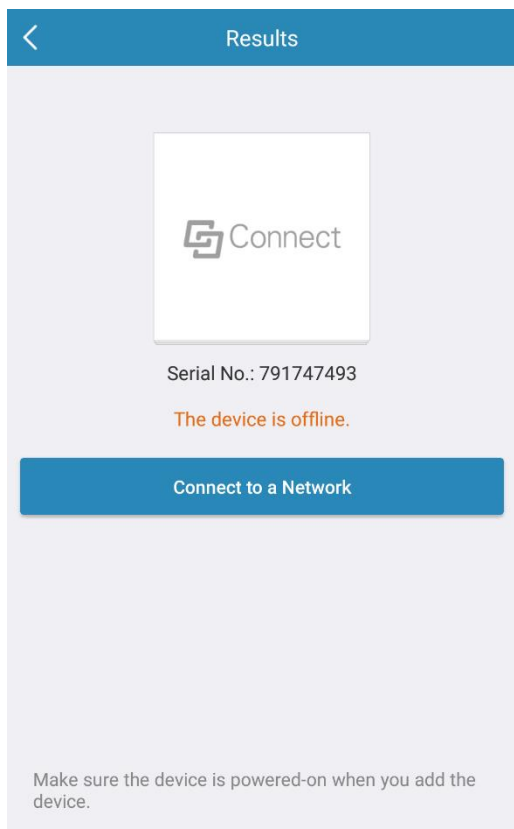
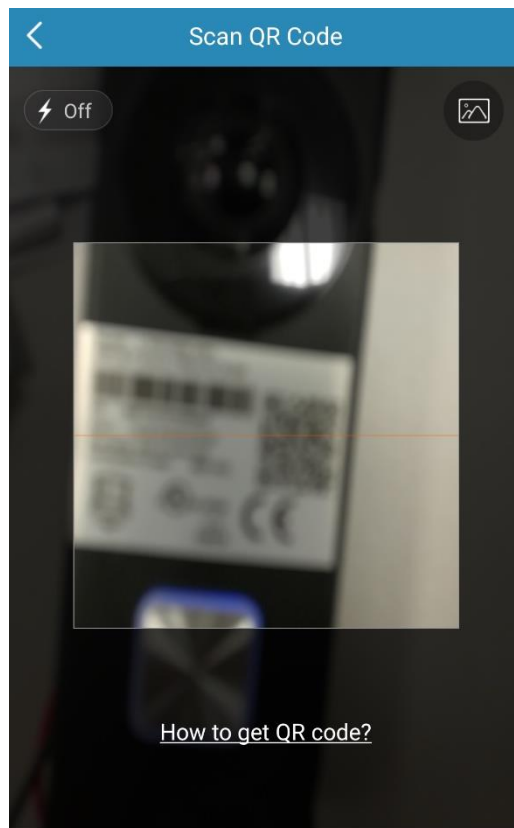
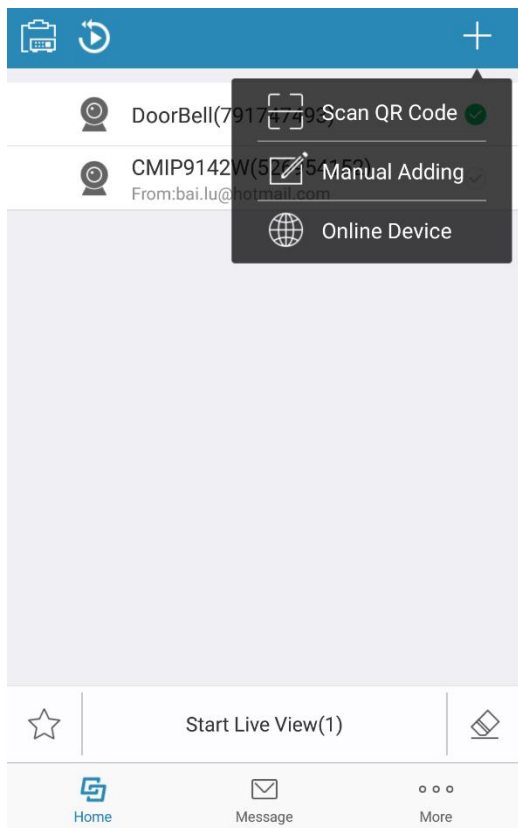
In LTS Connect App, scan the QR code on the front of the doorbell.

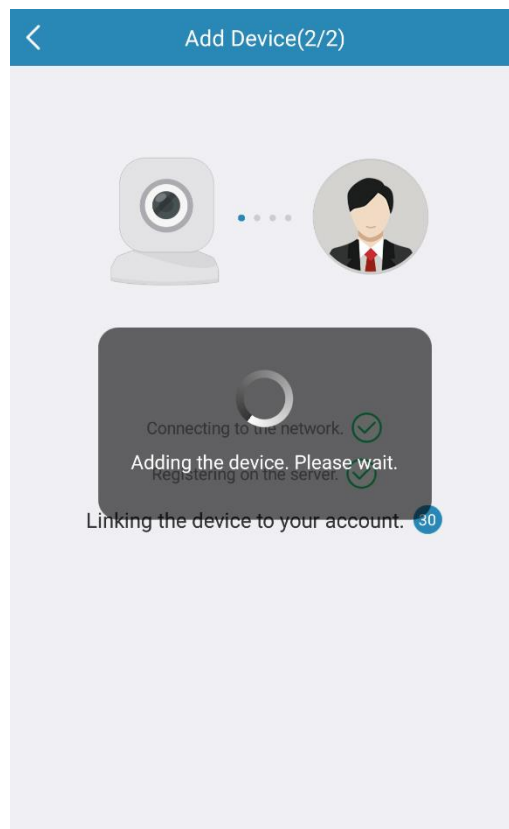
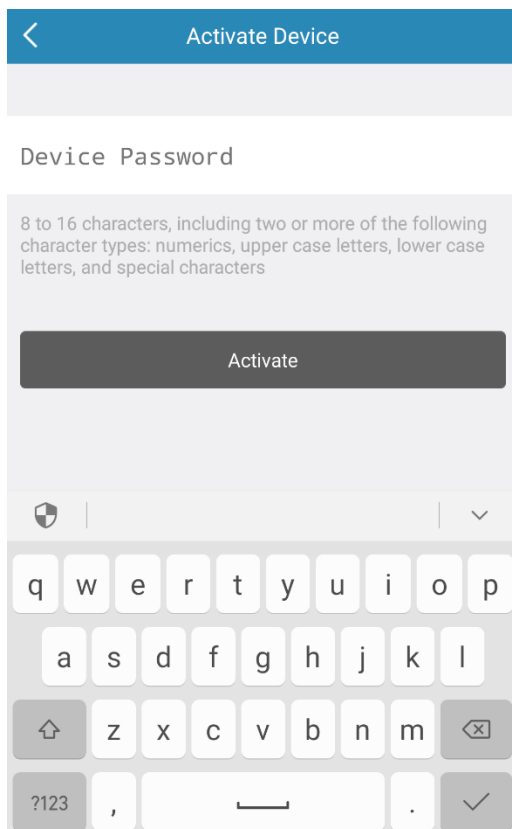
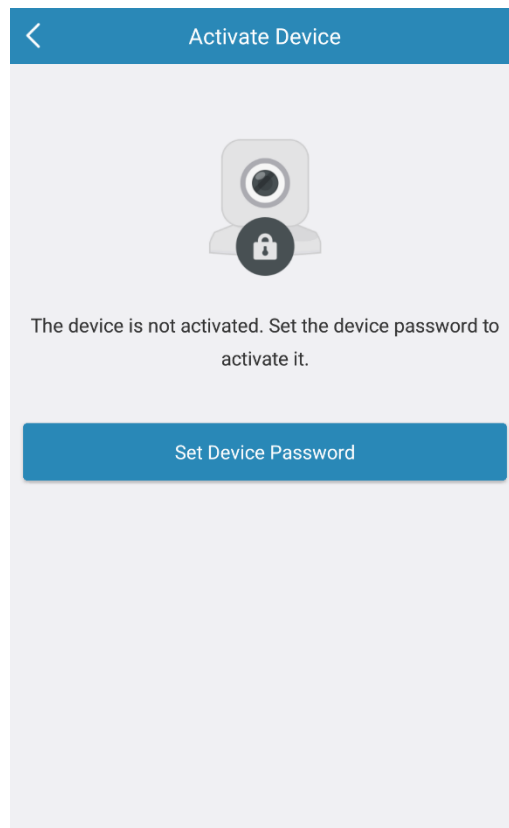
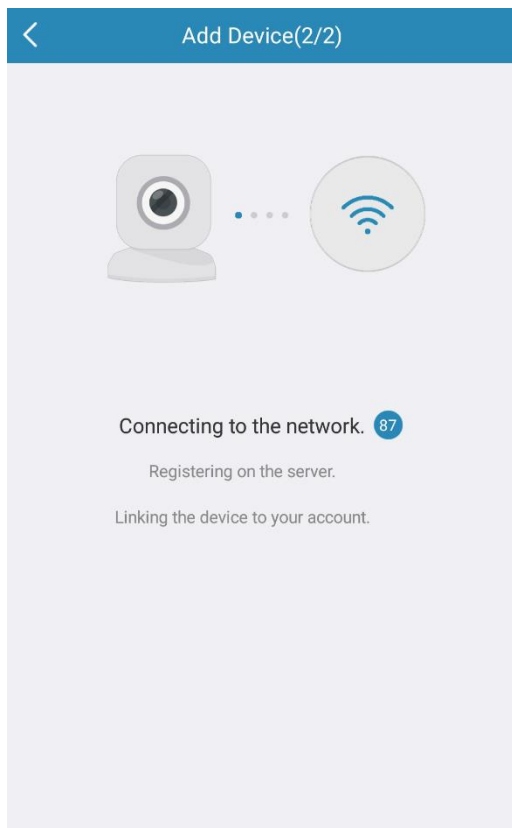
Choose ‘Wireless Connection’, and input Wi-Fi password.

When App showing ‘Connecting to the network’ screen,

1. For all firmware later than 20170830, simply wait for a beep.
2. If not, hold side button for 5 second and wait for ‘the Wi-Fi is configuring’

Then wait for ‘The Wi-Fi is connected’ and ‘The Server is registered’.





After adding the camera successfully, activate the device by setting device password.

Add the doorbell to an LTS NVR:

Use a PC in the same network, find the camera's IP address via IP Portal and follow normal IP camera adding process.

'Online Device' in LTS Connect App can tell doorbell IP address too.

IP Portal

Total number of online devices: 25

Export

Refresh

ID	Device Type	Security	IPv4 Address	Port	Software Version	IPv4 Gateway	HTTP Port	Device Serial No.
009	CMIP7452B-M	Active	192.168.1.10	7453	V5.4.0build 1702...	192.168.1.1	7452	CMIP7452B-M20160517BB*
010	CMIP3042W-28	Active	192.168.1.14	3043	V5.4.0build 1702...	192.168.1.1	3042	CMIP3042W-2820150918Bf
011	CMIP8222W	Active	192.168.1.9	8226	V5.4.0build 1608...	192.168.1.1	8225	CMIP8222W201508138BW
012	CMIP75122F-SE	Active	192.168.1.20	7513	V5.4.14build 170...	192.168.1.1	7512	CMIP75122F-SE20160308C
013	CMIP9382W-28M	Active	192.168.1.7	9383	V5.4.5build 1703...	192.168.1.1	9382	CMIP9382W-28M20170705
014	CMIP9142W	Active	192.168.1.13	9143	V5.4.0build 1702...	192.168.1.1	9142	CMIP9142W201507138BWf
015	CMIP7352W-28	Active	192.168.1.4	7353	V5.4.5build 1703...	192.168.1.1	7352	CMIP7352W-2820170428A
016	CMIP3022W	Active	192.168.1.8	3023	V5.4.0build 1702...	192.168.1.1	3022	CMIP3022W201507288BWf
017	CMIP7243W-SZ	Active	192.168.1.5	7247	V5.4.0build 1702...	192.168.1.1	7246	CMIP7243W-SZ20160607Bf
018	PTZIP212X20	Active	192.168.1.244	8000	V5.2.5build 1410...	192.168.1.1	80	PTZIP212X2020141117CCW
019	CMIP7442W-28M	Active	192.168.1.15	7443	V5.4.5build 1707...	192.168.1.1	7442	CMIP7442W-28M20150912
020	CMIP3333-Z	Active	192.168.1.23	3334	V5.1.0build 1407...	192.168.1.1	3333	CMIP3333-Z20130802CCWf
021	WH-CI1930-28	Active	192.168.1.21	2931	V5.3.0build 1605...	192.168.1.1	2930	WH-CI1930-2820150105CC
022	CMIP7812W	Active	192.168.1.22	7813	V5.3.2build 1605...	192.168.1.1	7812	CMIP7812W20150815CCWf
023	CMIP8222	Active	192.168.1.19	8223	V5.4.0build 1609...	192.168.1.1	8222	CMIP822220140618AAWR4
024	CMIP7422-M	Active	192.168.1.6	7423	V5.4.0build 1608...	192.168.1.1	7422	CMIP7422-M20160908AAW
025	LTK6128W-WIFI	Active	192.168.1.230	8000	V1.4.61build 170...	192.168.1.1	80	LTK6128W-WIFI012017080

Modify Network Parameters

Enable DHCP

Device Serial No.:

IP Address:

Port:

Subnet Mask:

Gateway:

IPv6 Address:

IPv6 Gateway:

IPv6 Prefix Length:

HTTP Port:

Security Verification

Admin Password:

Forgot Password

Modify