

This reading material is for internal technician training purposes. For all legal warnings and instructions, please refer to the official manual.

Welcome to the UI 4.0 Interface. We do the total redesign UI and improve the user experience. Here is the Quick Overview Guide I made for you...



### NVR 4.0 Main Features

1. Easy to Operate & Dark UI
2. Improved the Playback Experience
3. Improved the Backup function, Support AVI
4. More direct Camera Settings (WDR settings)
5. Extend the Analytic features
6. Improved the local PTZ usage/experience
7. Support LPR Vehicle Detection features
8. More Built-in-PoE Controls
9. NVR to NVR projection (continuous record only)
10. HTML5 support (less powerful, but no Plugin needed)


## Main Interface



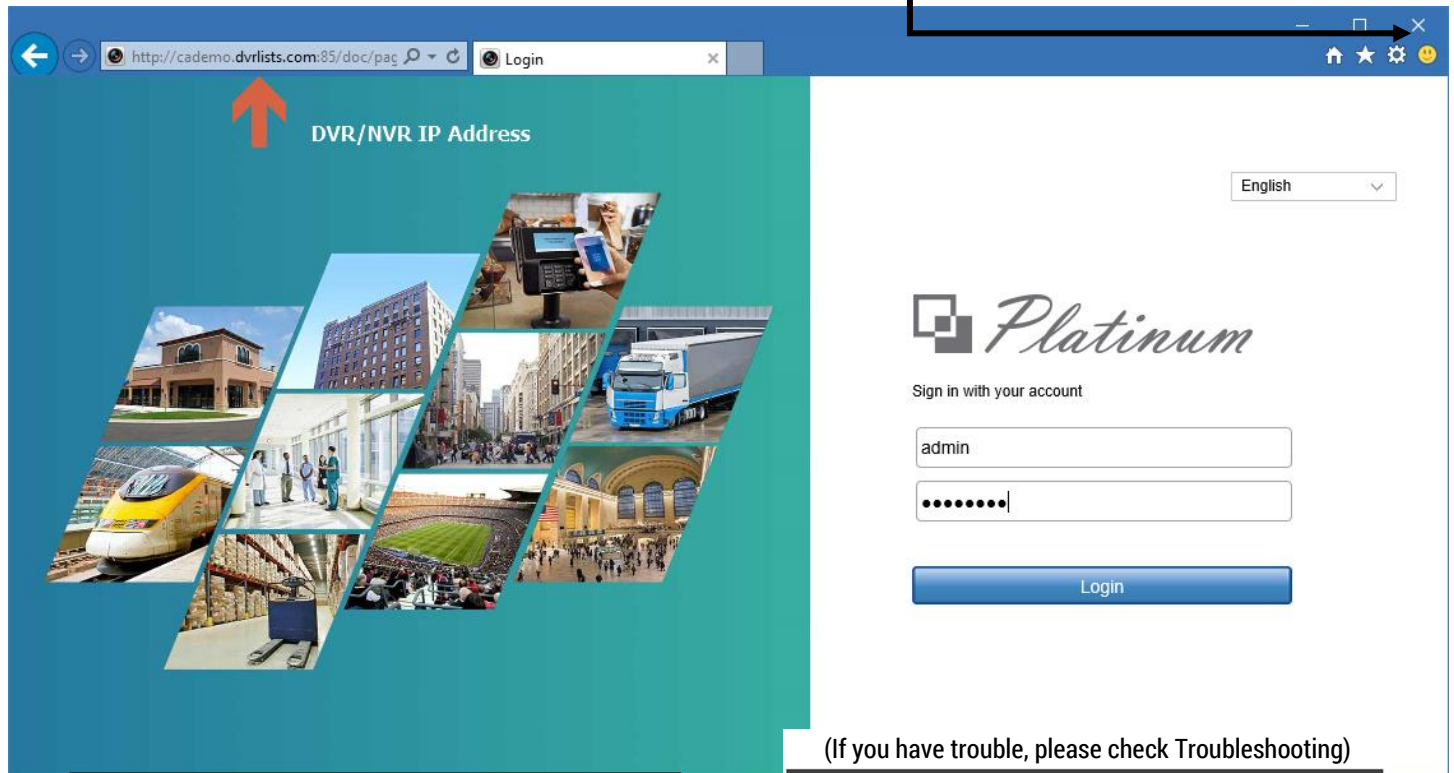
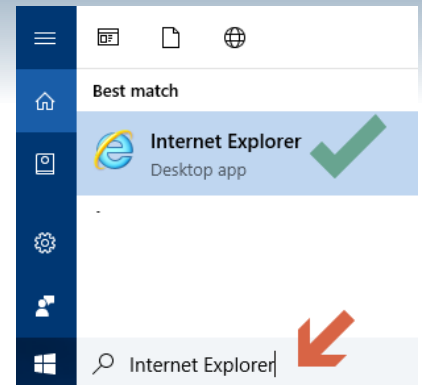
# Browser Support (PC)

To view is simple, open **internet explorer** first.  
(Require Open Ports: 80, 8000, 8554)

If you are using the Windows10 OS, please make sure using the **Internet Explorer**. not the Edge browser. Simply type Internet Explorer in the search section. Then, you should able to find it.

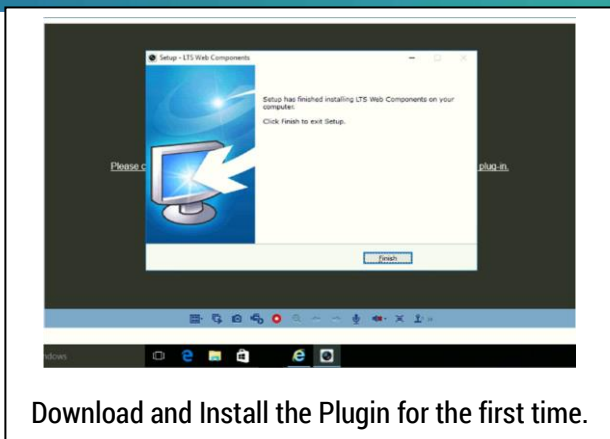
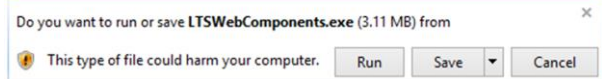
The other simple way to identify IE in the Windows10 is the  icon. Enter the DVR/NVR IP address, then you should see the Login window.

For the first time, you need to load the Plugin first.

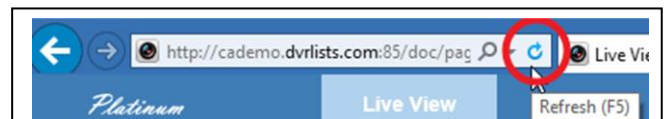


(If you have trouble, please check Troubleshooting)

Please click here to download and install the plug-in. Close the browser when installing the plug-in.



Download and Install the Plugin for the first time.

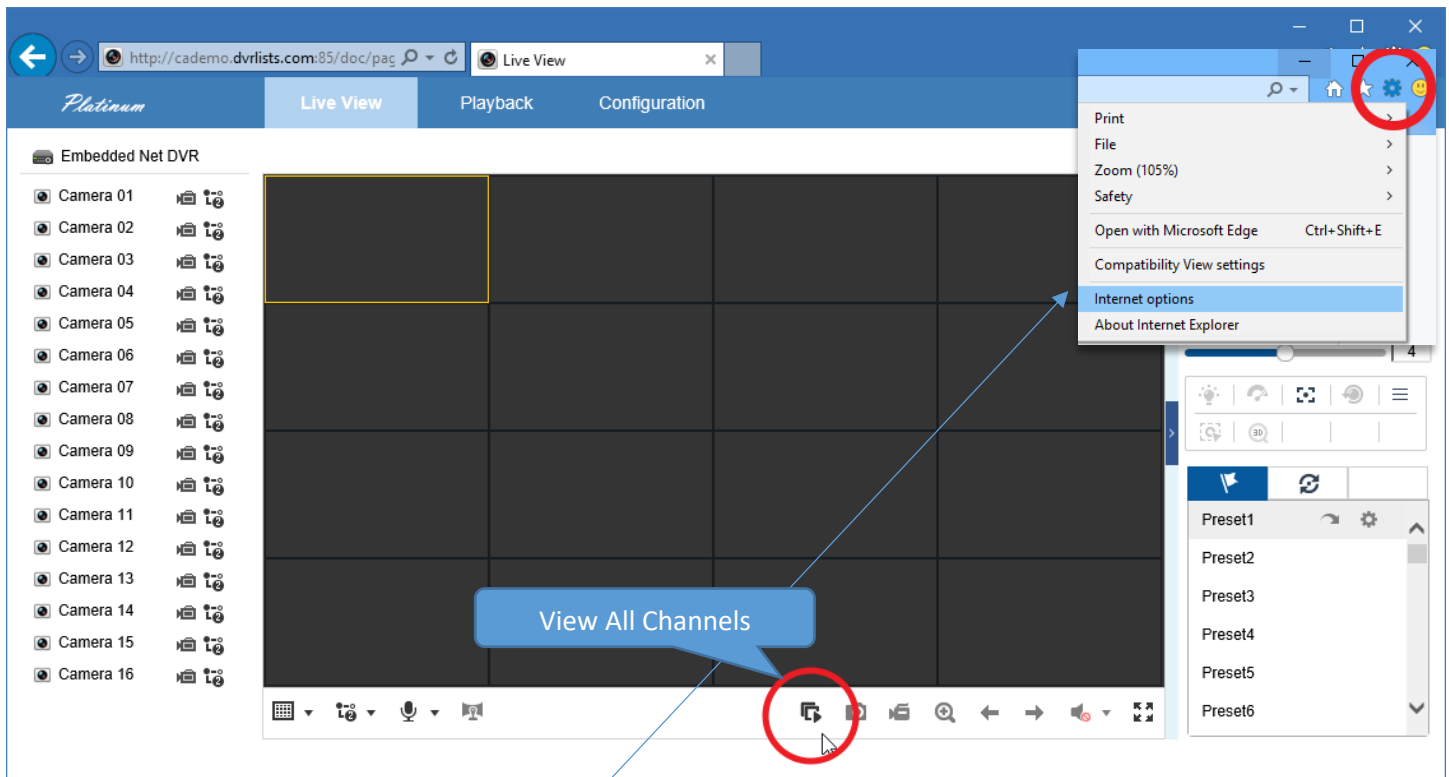


Refresh the browser after Install the Plugin, make sure click **Allow** at the bottom first.



# Browser Support – Live View

If you see the screen divider line, that means the Plugin is activated. Click  to Start view all camera.



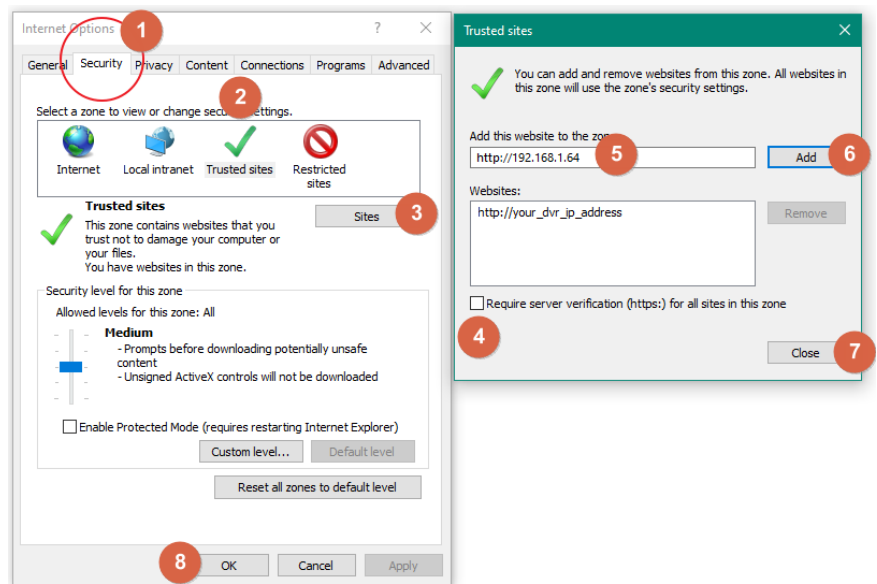
## Add to the Trust Site

### IMPORTANT

By default, Internet Explorer prevents download video by the security setting.

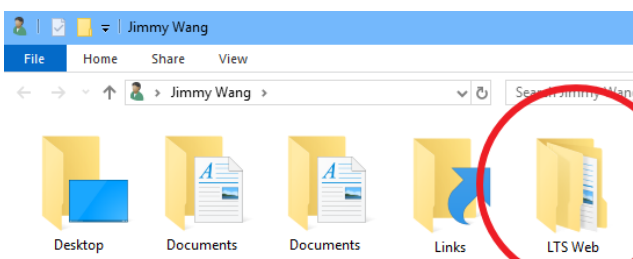
You need to add DVR/NVR address to the **Trust Site** Address.

After finish, please Re-Open the Internet Explorer to take effect.



## Snapshot / Save / Download

The file saved into the personal folder. **LTS Web**



# Browser Support – Playback



Select Camera Number (1) first, then select Date (2). Click Search (3). And finally, click Play (4) button. During the play, you also can drag the timeline at the bottom switch to another time.

 Click the Download button,

then you can select file & download it into the folder.

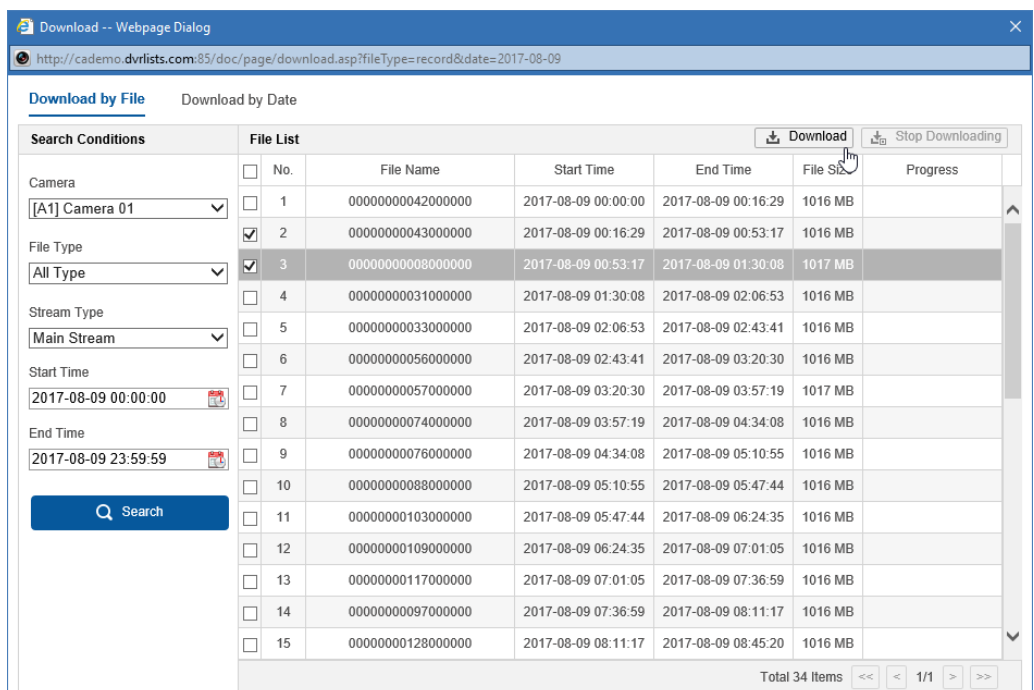
## IMPORTANT

By default, Internet Explorer prevents download video by the security setting.

Go to Internet Option > Security

**Disable Protected Mode** at bottom

Restart the Internet Explorer, Login again.



No.	File Name	Start Time	End Time	File Size	Progress
1	0000000042000000	2017-08-09 00:00:00	2017-08-09 00:16:29	1016 MB	
2	0000000043000000	2017-08-09 00:16:29	2017-08-09 00:53:17	1016 MB	
3	0000000008000000	2017-08-09 00:53:17	2017-08-09 01:30:08	1017 MB	
4	0000000031000000	2017-08-09 01:30:08	2017-08-09 02:06:53	1016 MB	
5	0000000033000000	2017-08-09 02:06:53	2017-08-09 02:43:41	1016 MB	
6	0000000056000000	2017-08-09 02:43:41	2017-08-09 03:20:30	1016 MB	
7	0000000057000000	2017-08-09 03:20:30	2017-08-09 03:57:19	1017 MB	
8	0000000074000000	2017-08-09 03:57:19	2017-08-09 04:34:08	1016 MB	
9	0000000076000000	2017-08-09 04:34:08	2017-08-09 05:10:55	1016 MB	
10	0000000088000000	2017-08-09 05:10:55	2017-08-09 05:47:44	1016 MB	
11	0000000103000000	2017-08-09 05:47:44	2017-08-09 06:24:35	1016 MB	
12	0000000109000000	2017-08-09 06:24:35	2017-08-09 07:01:05	1016 MB	
13	0000000117000000	2017-08-09 07:01:05	2017-08-09 07:36:59	1016 MB	
14	0000000097000000	2017-08-09 07:36:59	2017-08-09 08:11:17	1016 MB	
15	0000000128000000	2017-08-09 08:11:17	2017-08-09 08:45:20	1016 MB	

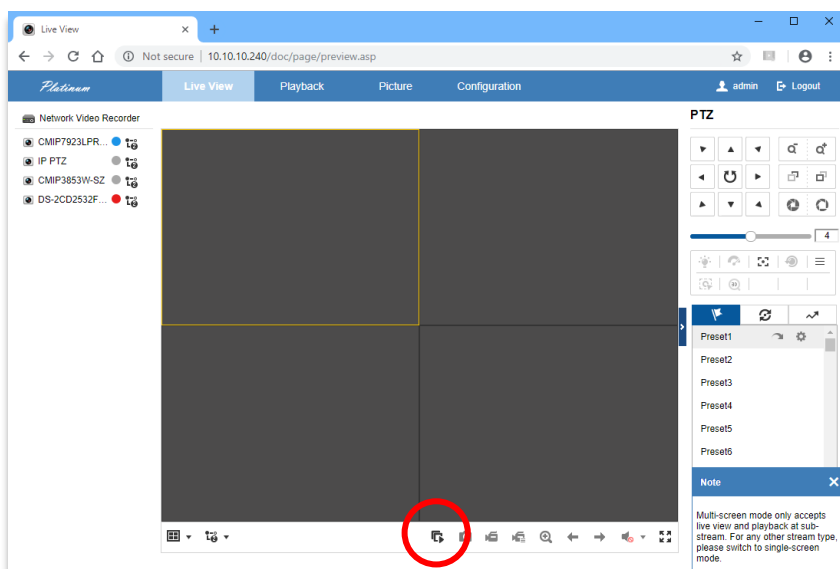
# HTML5 Browser (Chrome/Firefox/Edge/Safari)

UI4.0 DVR/NVR (see page 1) now supports the HTML5 Browser with no Encryption Steam. However, there are a couple things do require first. (Require Open Ports: 80, 8000, 8554, **7681**)

1. The open port requires one more, 7681. This hidden port number cannot be changed.
2. Only single channel supports both Main/Sub Stream.
3. Multiple Live View window only supports up to 4 channels with the Sub Stream.

## Live View

Based on the HTML5 programming limitations, the Live view cannot support more than 4 windows with substream. If you need more windows to view at the same time, please use the Internet Explorer or use the Client software NVMS7000 (PC).



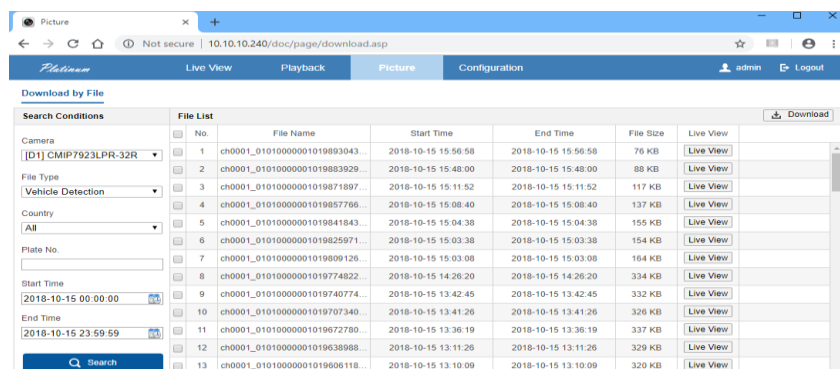
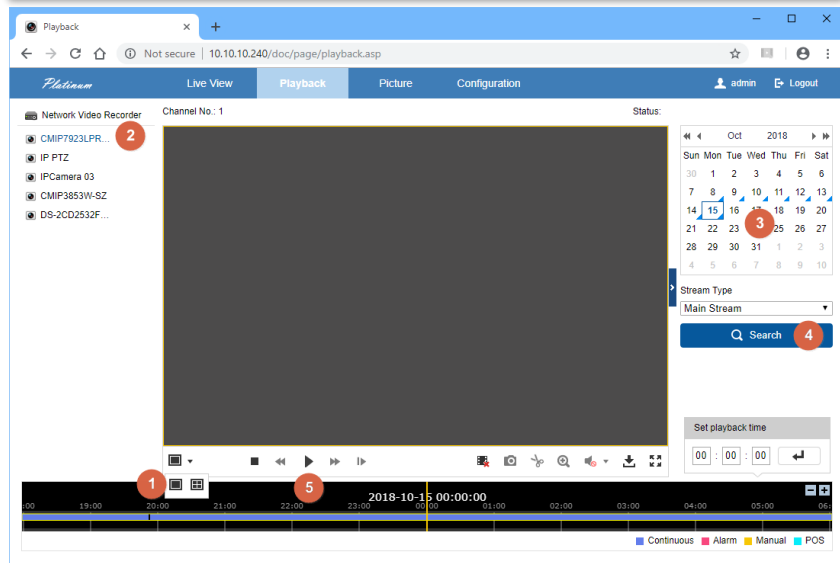
## Playback

The playback section is also the same. By default, it is pre-selected as the Substream with 4 windows.

1. Select Single Screen first.
2. Select Camera
3. Select Date
4. Search
5. Click the Play button.
6. Move the Time bar or Set Playback Time

**\*Important\***

You need to switch it back the Main Stream first. Otherwise, you will get the "No file found" error.



All rest of functions should be very similar to the IE except the configuration maintenance section.