

This reading material is for internal training purposes. For all legal warnings and instructions, please refer to the official access control user manual. Please visit our LTS website for more information. LTK3500S is defined as the Terminal, not the doorbell.



### Main Features

- 1920x1080p@30fps High Definition.
- 50,000 Cards Record, 200,000 Events.
- Unlock Door Remotely Using LTS Connect.
- Anti-Passing Back
- Support Wi-Fi 2.4G
- Support MicroSD Card (Class 10, up to 128GB)
- LTS NVR Compatible
- IP65

### IMPORTANT

**This device uses DC12V/1A only.**

Do not share this power with any other devices.

**Take a photo of the back-panel sticker before install.** You will need this when pairing to the LTS-Connect App. Check that the device powers up and that the firmware is up to date before installing.

### Before installation:

1. This device only supports 12VDC, not PoE. Also, do not share the power with other devices.
2. Take a picture of the LTK3500S Back-panel Sticker first. It is required for the LTS-Connect.
3. Mobile App is LTS-Connect. (Do not use NVMS7000 App)
4. Internet connection may be required.
5. Programming software is PC NVMS7000, supports Windows PC only.
6. First 3 pages for the hardware installation; the rest of the pages are for software setup (copied from LTK28xx manual)



**Warnings**

Follow these safeguards to prevent serious injury or death.

**Cautions**

Follow these precautions to prevent potential injury or material damage.

All the electronic operation should be strictly compliance with the electrical safety regulations, fire prevention regulations and other related regulations in your local region. Please use the power adapter, which is provided by normal company. The power consumption cannot be less than the required value. Do not connect several devices to one power adapter as adapter overload may cause over-heat or fire hazard. Please make sure that the power has been disconnected before you wire, install or dismantle the device. When the product is installed on wall or ceiling, the device shall be firmly fixed. If smoke, odors or noise rise from the device, turn off the power at once and unplugging the power cable, and then please contact the service center. If the product does not work properly, please contact your dealer or the nearest service center. Never attempt to disassemble the device yourself. (We shall not assume any responsibility for problems caused by unauthorized repair or maintenance.)

### Installer License Requirements for Business environments:

Low Voltage Installation – C7 License

Fire Alarm – C10 License

Your State/City license requirements may vary.

Please note, LTS is not responsible for any issues related to installer license requirements.

### California

Low Voltage Specialty License Types:

Low-Voltage Systems C-7

Electrical Contractor  
(includes Fire Alarm installations) C-10

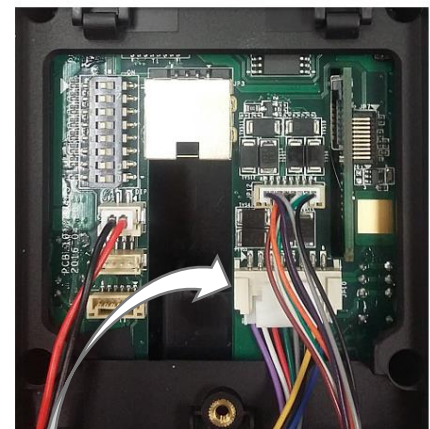
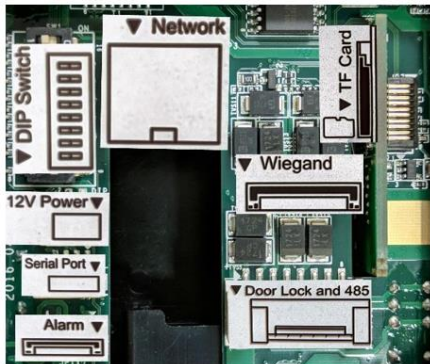
Fire Protection Contractor C-16

Lock and Security Equipment Contractor C-28

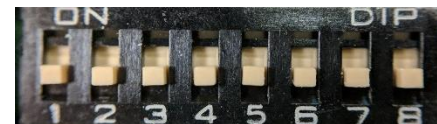
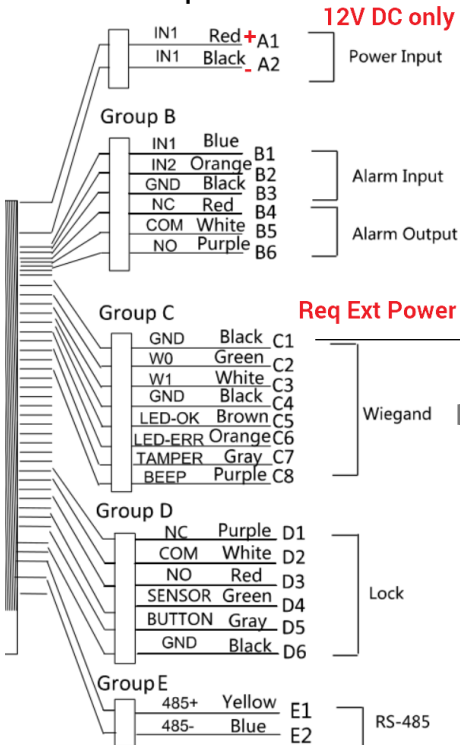
Solar C-46

## Connection / Wiring:

There are no cables installed permanently to the back panel of the device.  
Please manually plug in the cables that are required for your installation.

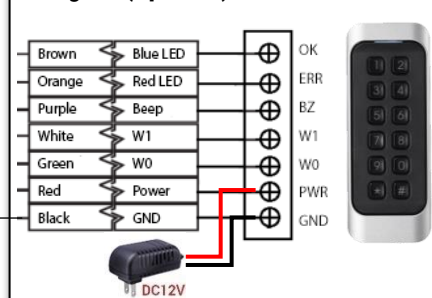


### All Wires Description:

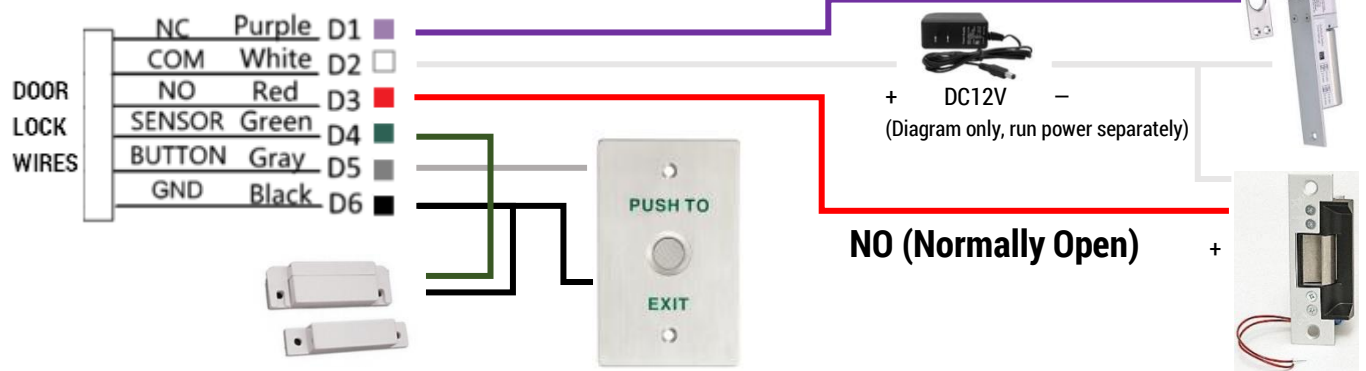


- 1-5 RS485 Address (Check User Manual)
6. ☐ OFF Terminal Mode ☐ ON Card Reader Mode
7. Card Reader Mode Only.  
☐ OFF (10 digits key#) ☐ ON (8 digits)
8. (see User Manual)

### Wiegand (Optional)

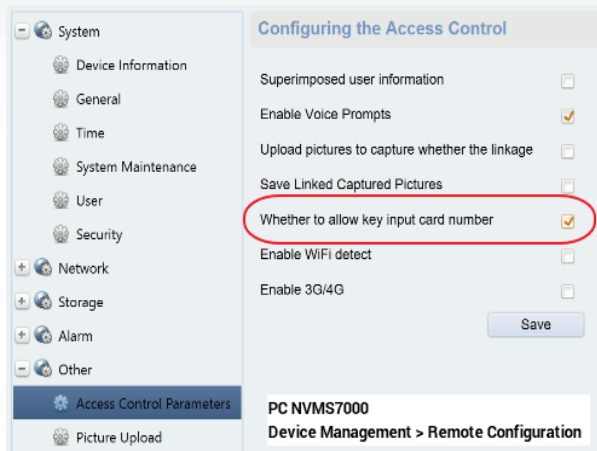


### Door Lock Wiring Connection:



**Note:**

## Troubleshooting: (1<sup>st</sup> Edit: Perry; 2<sup>nd</sup> Edit: Eric)



### Setup for the Stand-Alone Terminal Note: (1<sup>st</sup> Edit: Perry; 2<sup>nd</sup> Edit: Jimmy)

Activate the device, assign an IP address, and add into NVMS7000 first. By default, LTK3500s is set to terminal mode. The front reader only supports 34-Bit Wiegand (10 digit) input. It can also support an additional Wiegand card reader if needed. A Wiegand or RS-485 card reader can be added as an exit reader or the entry reader (keypad). These readers are not limited to 34-Bit Wiegand, but it makes little sense to have the 2 devices not running the same protocol. Please remember that separate power must be provided to the card reader.

By default, the LTK3500S does not support authentication with the keypad. You must enable this in the remote configuration of the device. To enable this function, go to PC NVMS7000. Device Management > select LTK3500s device > Remote Configuration. Go to Other > Access control Parameters > Whether to allow key input

**Q:** Message: “The room number cannot be empty, please input the room number” when a card is swiped.

**A:** The card has not been added to the device yet. Check that the card has been added to a profile, place the profile into the permission and apply the permission to the device.

**Q:** The App makes me create a new password when I’ve already made one for it.

**A:** Make sure the firmware has been updated on the LTK3500S.

**Q:** The LTK3500S does not respond or do anything at all when I swipe a card, it only Beeps one time.

**A:** The device has been set into Card Reader mode, toggle Dip Switch #6 into the down position. You will need to power cycle the unit after any dip switch changes.

**Q:** Why does the LTK3500S require a separate power supply?

**A:** To ensure the LTK3500S does not have any power fluctuations.

**Q:** Can the LTK3500S be integrated with the LTK28xx Access Controller device?

**A:** Yes

**Q:** Can the LTK3500S be integrated with an LTS NVR/DVR?

**A:** Yes. But, make sure the NVR/DVR firmware is after 2017.

**Q:** If I connected the LTK3500S to the NVR, can I unlock the door from the NVR?

**A:** Due to security reasons, you cannot unlock the remote door from the NVR. There are 2 ways to remote unlock the door; Either the LTS-Connect App or the PC NVMS7000 (Locally).

**Q:** Which Mobile App is used for the LTK3500S??

**A:** LTS-Connect. Please download the app from the App store for your mobile device. NVMS7000 is not recommended as it has no unlock feature for the LTK3500S.

**Q:** What is the remote access method for the LTK3500S?

**A:** For security reasons, the LTK3500S uses PTCloud (P2P) technology for remote access. IP/Domain is not supported.

**Q:** Where is the QR Code for adding to PT Cloud?

**A:** Only found on the back of the unit. (See picture to the right)

**Q:** How to default the 3500S setting back to inactivate?

**A:** use PC NVMS7000 (Restore All = Factory Default)

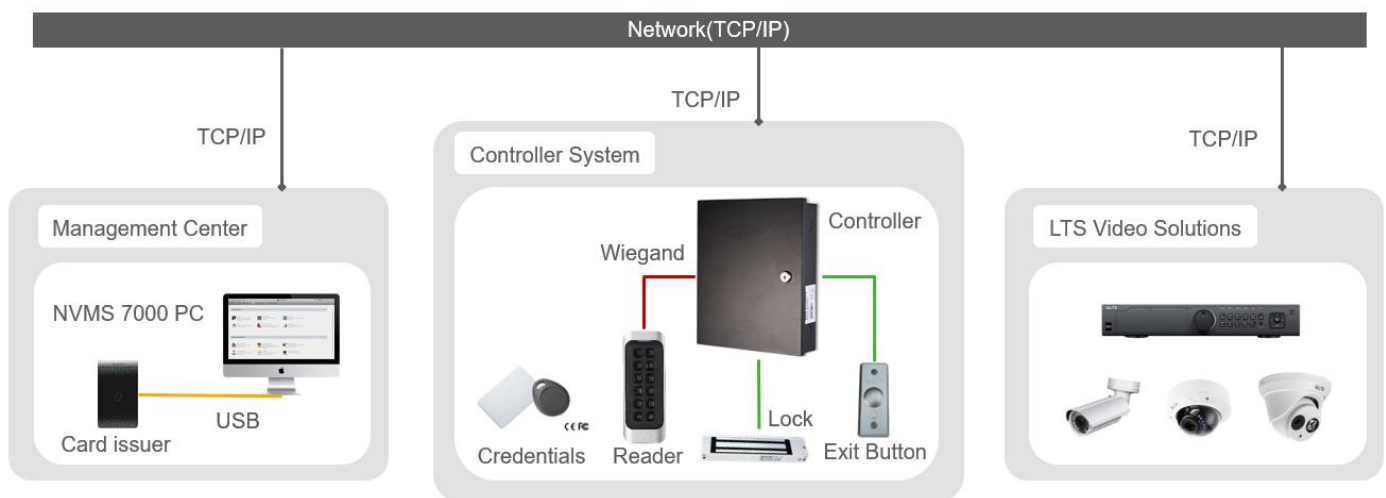


# Software

Access Control Software: NVMS7000



**This Setup section is copied from the LTK28xx quick guide. So, please don't be focus on miss-match pictures or labels. Get the idea that will be fine.**







# Setup Controller Local IP Address

Before adding the device, the IP address needs to be programmed first.  
Click Modify Netinfo and set up the local network IP address

+ Add to Client + Add All <b>Modify Netinfo</b> ↺ Reset Password ⚡ Activate				
IP	Device Type	Firmware Version	Security	St
192.0.0.64	LTK2802	V2.0.1build171122	active	8

Modify Network Parameter

Device Information:

MAC Address: 88-88-88-88-88-88 Copy

Software Version: V2.0.1build171122 Copy

Device Serial No.: 00000000000000000000000000000000 Copy

Network Information:

☐ DHCP

Port: 8000

☒ IPv4(Enable)

IP Address: 192.168.1.205

Subnet Mask: 255.255.255.0

Gateway: 192.168.1.1

☐ IPv6(Disable)

Password:

OK Cancel

## Add Controller / Naming

1. Click Add
2. Choose IP/Domain
3. Enter Controller Nickname, IP, User & Password.

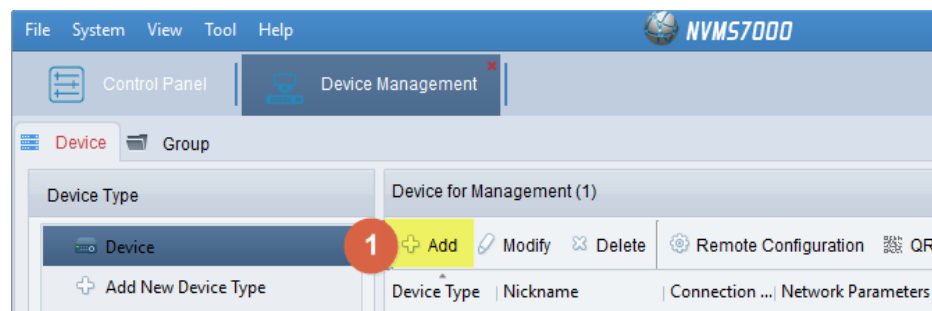
**\* Important \***

**Please make an appropriate nickname.**

It helps to label the controller if you have more than one. (See Page 10)

**Make sure to enter the correct password before clicking Add.** The password is the password that was chosen in the Activation step". The wrong password will cause the 'Export to Group' to fail. If you enter the wrong password when you are adding the device, delete the device and re-add'

4. Click Add when finished.



Add

Adding Mode:

☒ IP/Domain ☐ IP Segment ☐ PT Cloud Domain ☐ EHome ☐ Serial Port

2 Add Offline Device

Nickname: Front Office Controller 3

Address: 192.168.1.205

Port: 8000

User Name: admin

Password: .....

☒ Export to Group

Set the device name as the group name and add all the channels connected to the device to the group.

4 Add Cancel

**Check Connect Status:**

NetStatus shows Green color. (Ready)

Device for Management (2)						
+ Add ↺ Modify ✕ Delete ⚙ Remote Configuration 📄 QR Code ⚡ Activate 📶 Device Status						
Device Type	Nickname	Con...	Network Parameters	Device S...	Security	Net Status
Access Controller	Front Office Controller	TCP...	192.168.1.205:8000	LTK2802...	Strong	🟢
Encoding Device	NVR 8832	TCP...	cademo.dvrlists.co...	LTN883...	Weak	🟢

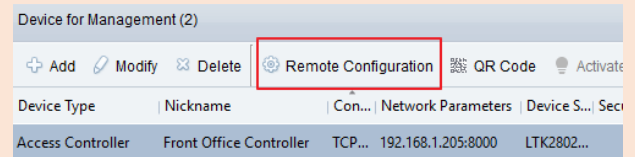
If it is not connected, please double check the connection or setting again.

# Sync Time



Controller's Time may not be accurate when the controller is first set up.  
Please synchronize the time before use.  
Manual time change currently disabled.

Synchronization requires Internet access with NTP server.



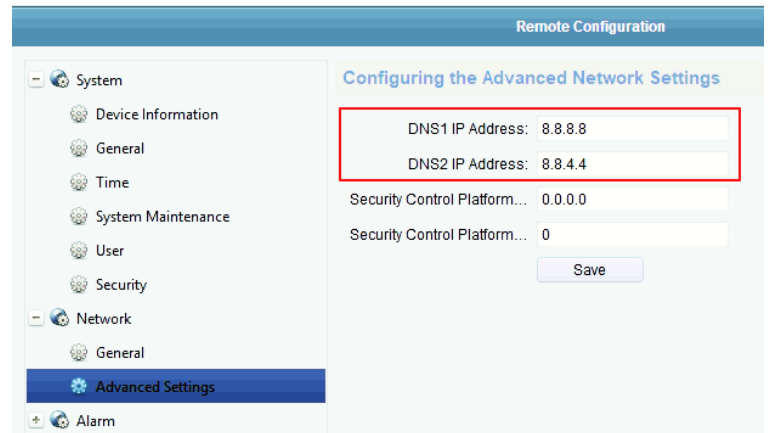
## Check DNS

Highlight Controller, click **Remote Configuration** to open the controller settings:

Check **Network > Advanced Settings**.

Make sure DNS set correctly.

If it is 0.0.0.0, change to 8.8.8.8. Click **Save**.



## Enable NTP

Go to **System > Time**.

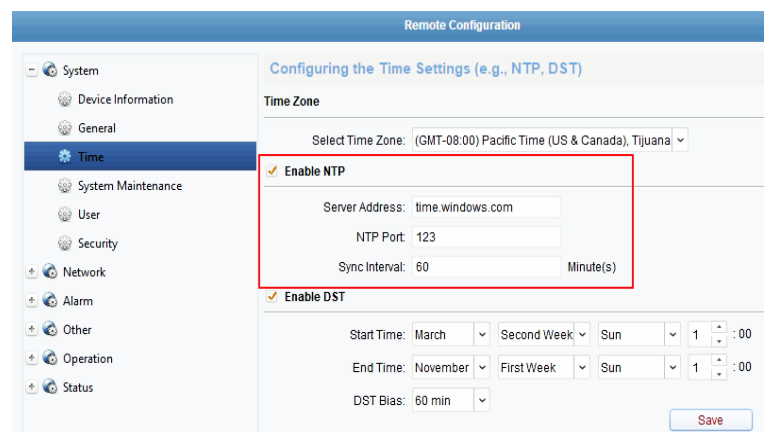
Checkmark Enable NTP

Enter Server Address (if empty): time.windows.com

NTP Port: 123

Sync Interval: 60

(After Sync Successful, you may change Interval to 1440 avoid Sync too often)



Check that DST Settings are correct, **Save**  
[\(Link\)](#)

## Reboot

Go to **System > System Maintenance > Reboot** After reboot, controller time should be correct. Please double check the status bar message.

## Check Time



How to check the Controller Current Time?

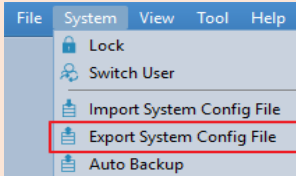
Go to the bottom section under Device Management. The Controller Start Time = Current Time. Press refresh & check.



+ Add to Client + Add All Modify Netinfo Reset Password Activate						
IP	Device Type	Firmware Version	Security	Server Port	Device Serial No.	Start Time
192.168.1.205	LTK2802	V2.0.1build 171122	Active	8000	LTK2802201711...	2018-03-10 10:20:49

# Important, Backup the Settings!

Backup Settings becomes more important when you try to program the Access Control.  
Always back up the settings! Backup (Export) settings are located in the System Menu bar option"



**Use Export System Config File to backup your settings file INCLUDING the Access Control Database, Permission and Attendance settings, as well as other vital information. Please remember to keep this file secure.**  
Use **Import System Config File** to restore the settings.

Auto Backup is a new feature. The settings back are backed up according to a set schedule.

## Label / Name (Door):

Clearly labeling the different access control components will make the job easier when you try to set up or manage the system after the system has been installed.

## Labeling/ Naming Door

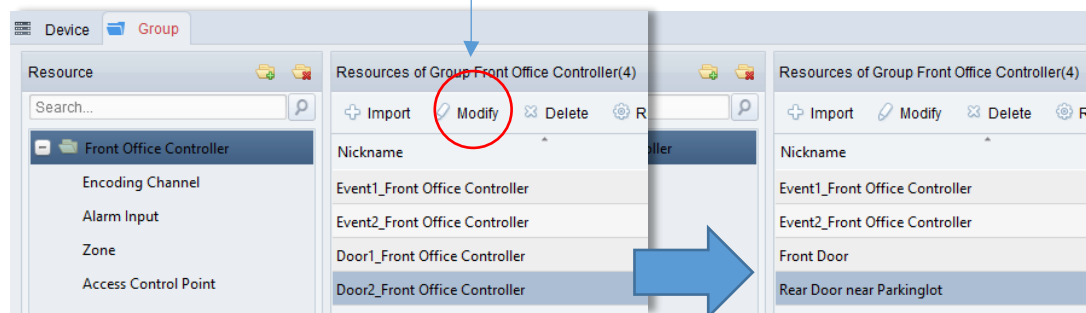
**Device Management > Group.**

Highlight the door device, click **Modify**.



By default, it is named as Door#\_(Controller Name)

It is recommended to change the default name to a more appropriate name.

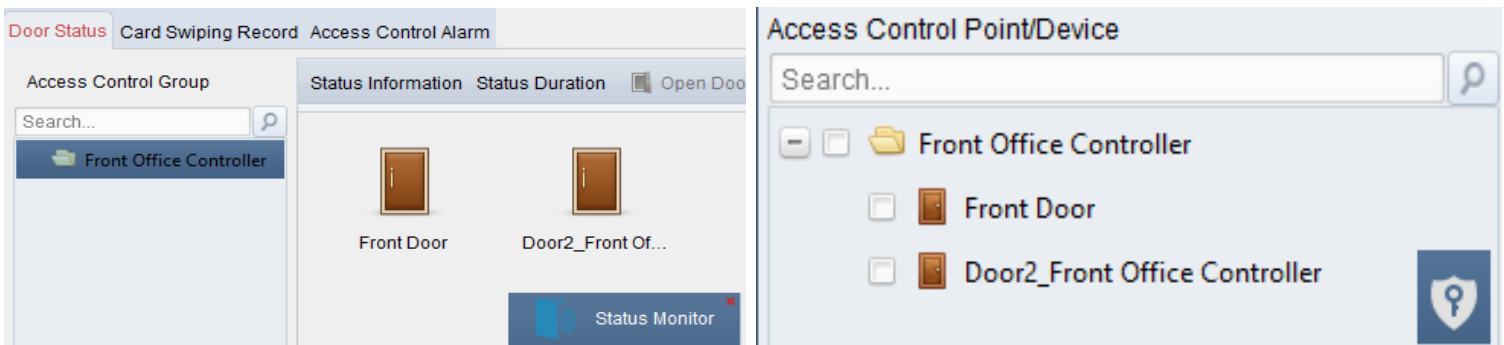


For example:

Door1 to Front Door

Door2 to Back Door

From the picture on the right, the importance of clear labels is shown.





# Add Module

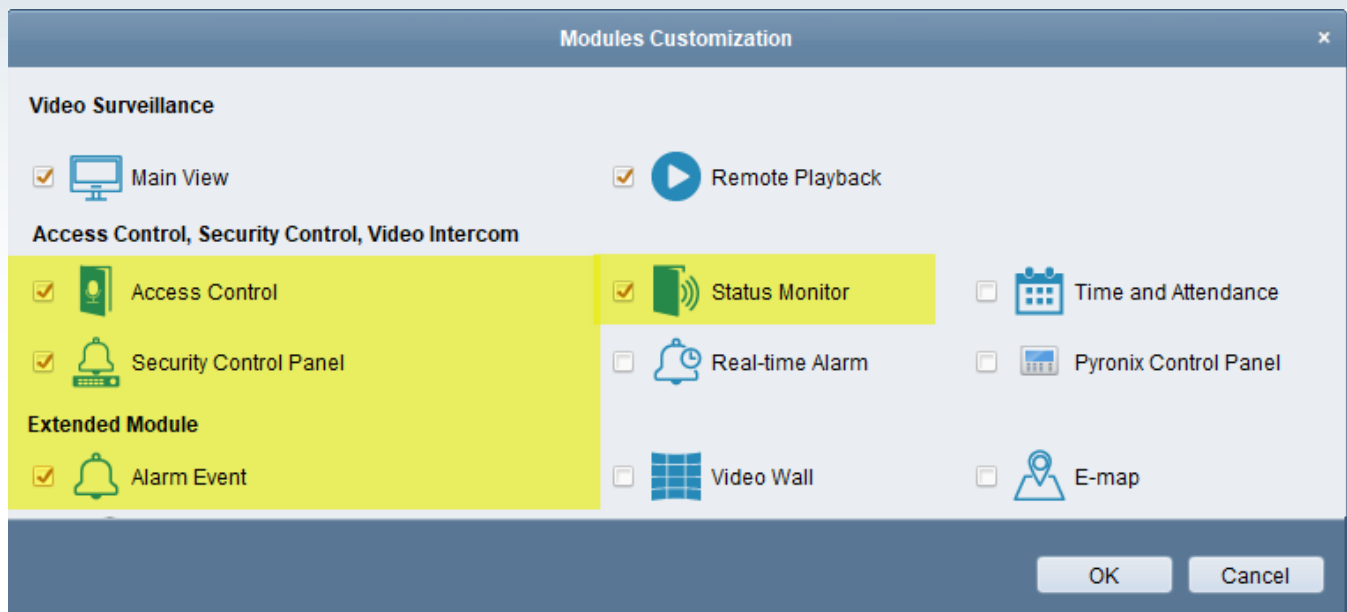
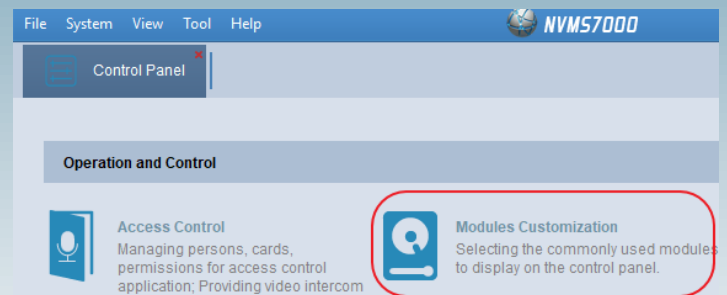


## Adding Access Control Modules

Control Panel > Modules Customization



Access Control  
Status Monitor  
Alarm Event



Note: Only the latest version of NVMS7000 (PC) supports Access Control

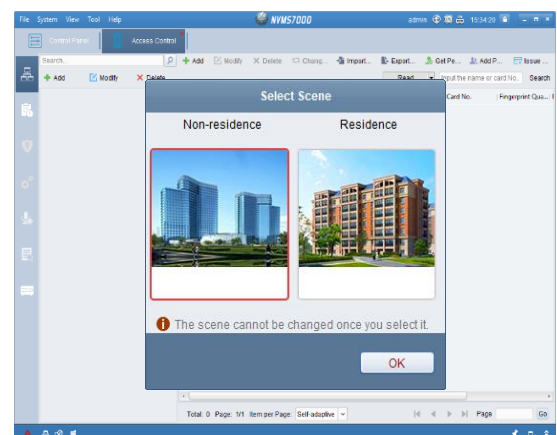
## Scene Selection

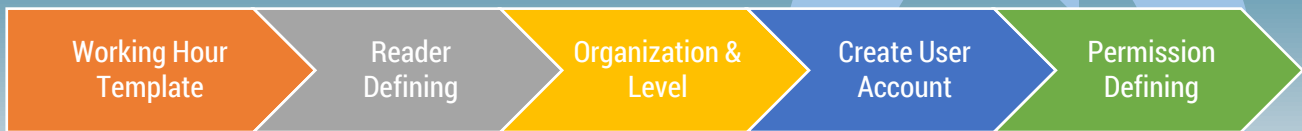
Upon opening the access control tab in the newest version of NVMS7000, the software will prompt you the following Scene question:

### Non-residence or Residence.

The wizard sets help pre-program based on the scenario.

**Note:** Once the scene is selected, it cannot be changed, unless NVMS7000 is uninstalled and then re-installed to reset the setting. Also, When you select **Non-Residence** mode, you cannot configure the Attendance Rule when adding a person





## Guideline / Directions:

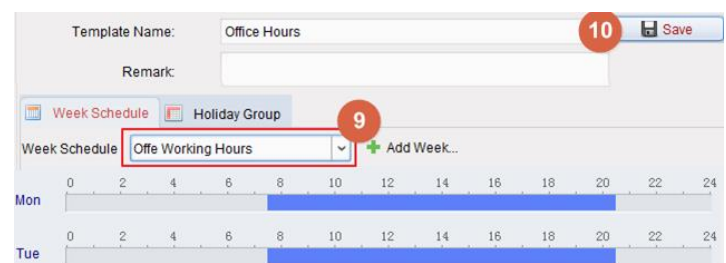
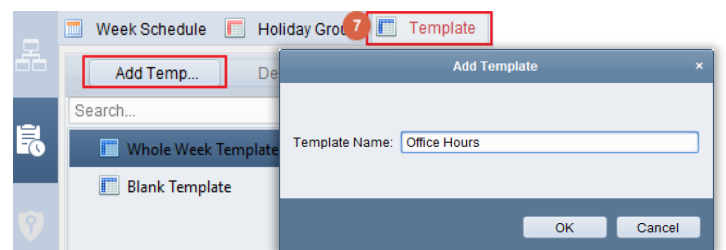
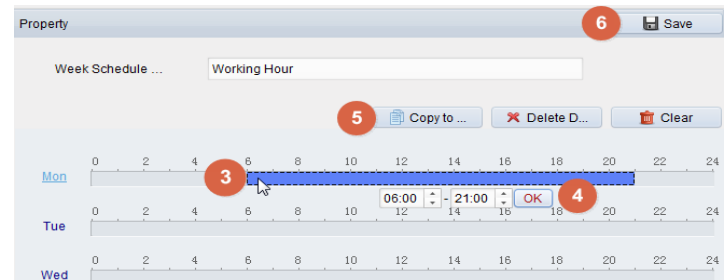
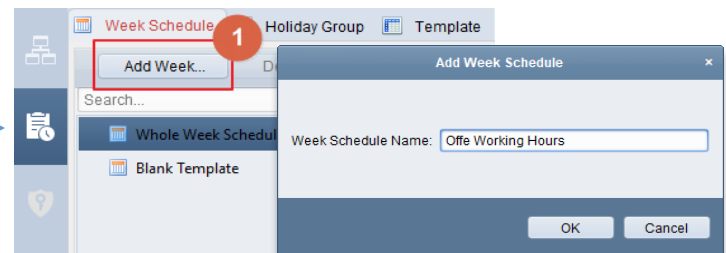
1. Create Working Hour Template
2. Define the Wiegand Reader Working Hour
3. Create Organization Structure and Level
4. Create Personal Account, Card# and working hours
5. Define the Access Permission
6. Final, Test it and use Status Monitor to check the status.

Tutorial Video: <https://www.youtube.com/watch?v=v2d5atg3h1I>

## Define Working Hour / Template

Open **Access Control** > Schedule & Template

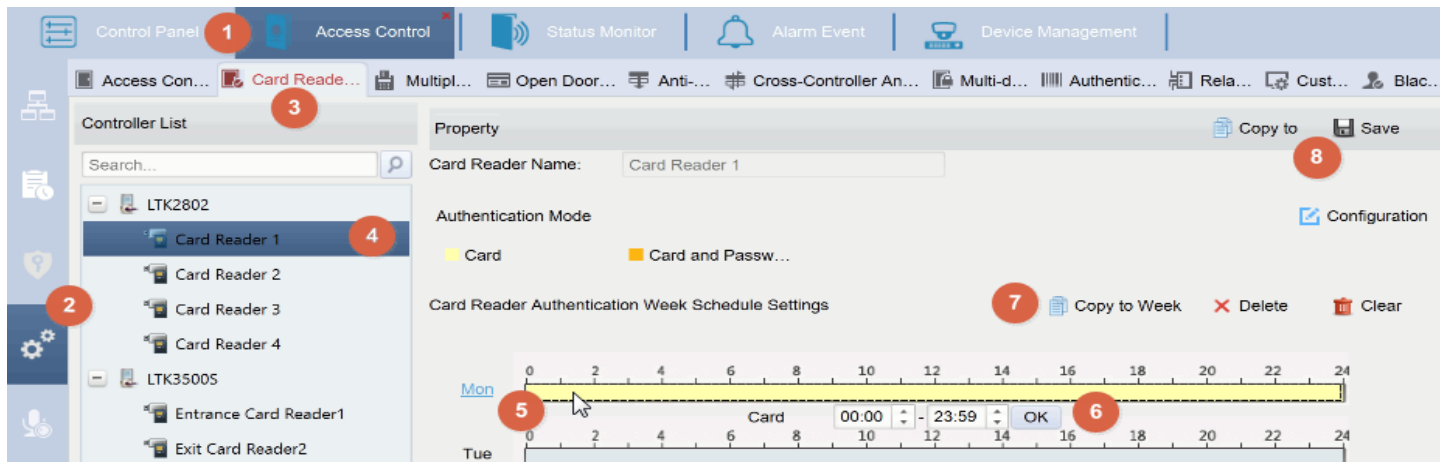
1. Select Week Schedule, Click **Add Week...**
2. Define Schedule Name (Example; Office Working Hours)
3. On the weekly schedule, draw a line to define the time period.
4. Define it more precisely and click **OK**.
5. use **Copy to...** to apply the timeline to other weekdays.
6. click the **Save** button on the top right to keep the changes.
7. **Switch to the Template** > **Add Temp...**
8. Define Template Name (For example; Office Hours)
9. **Select Week Schedule** you created.
10. Click the **Save** button in the upper right corner.



# Program Wiegand Reader Schedule

## Program Card Reader Authentication (For more detail, read Ch 6.8.2 in User Manual)

1. Go to **Access Control** >
2. **Advanced Function** >
3. **Card Reader Authentication**
4. Select Reader first.
5. Drag and Draw to define the timeline.
6. Click the time bar to enter or edit a more precise timeframe, click **OK**
7. Use Copy to Week. That will copy the current highlight to others. Use Delete to erase, or Clear to reset all.
8. Final, click **Save** to keep the setting. Or, use **Copy** to setting to other Readers.



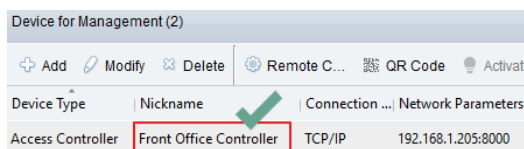
## Define the Reader Parameter

### Access Control Parameter

Most times, you don't need to change the Access Control Parameter.

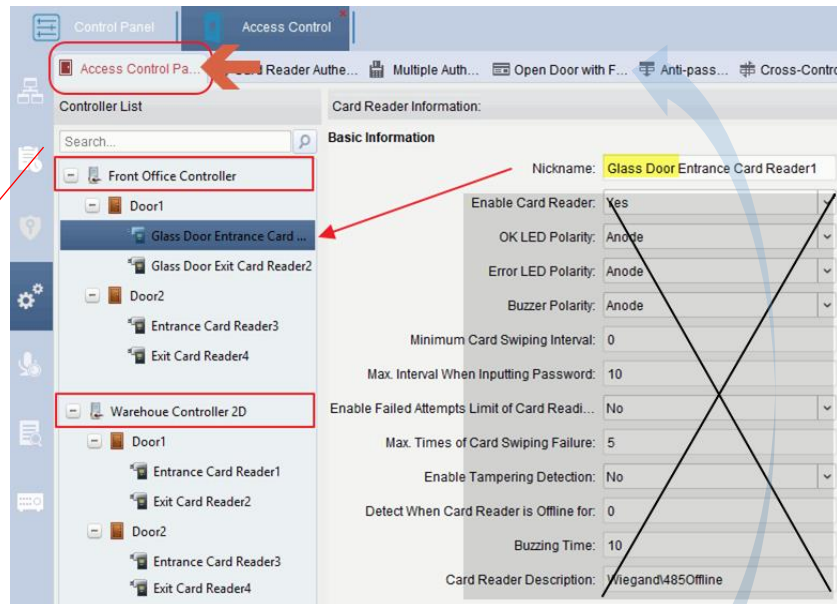
### Change Controller's name:

The setting to change the Controller's name is found in the Device Management setting



### Change Wiegand Reader's name:

Changing the Wiegand Reader's display name is not necessary, but it is helpful for certain situations to clarify the Wiegand Reader's location.



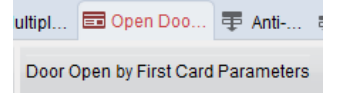
**Open Door with First Card** Purpose: You can set multiple first cards for one access control point.

After the first card swipes, the controller allows multiple persons to access the door or other authentication actions. The first card mode contains **Remain Open with First Card**, **Disable Remain Open with First Card**, and **First Card Authorization**.

### Remain Open with First Card, Disable Remain Open with First Card

The door remains open for the configured time duration after the first card swipes until the remain open duration ends.

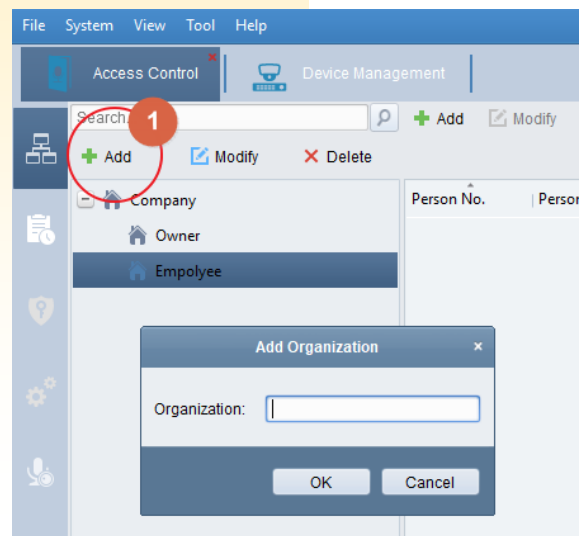
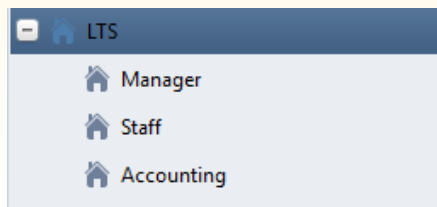
**First Card Authorization:** All authentications, except for the authentications of super card, duress card, and duress code, are allowed only after the first card authorization.



## Create Organization & Department

Open **Access Control > Person & Card**

1. Click **Add** to create the Organization, click **OK**
2. Click **Add** again and create another department.  
For Example:

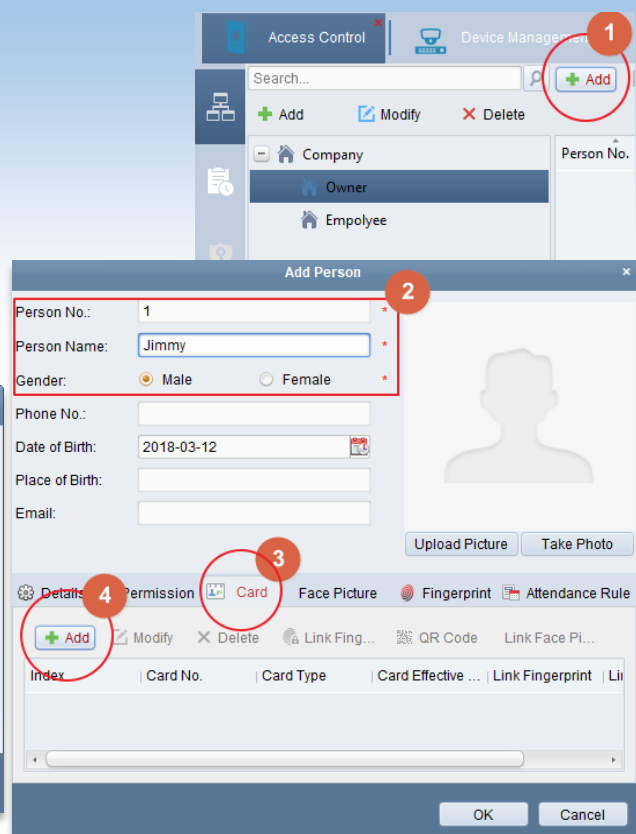
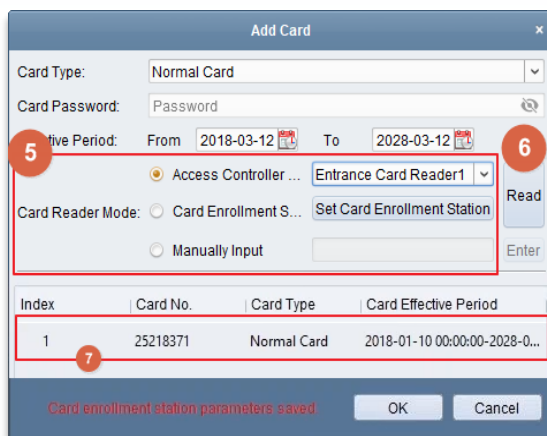


## Create User Account:

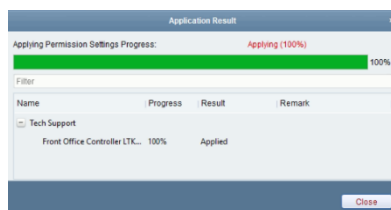
Open **Access Control > Person & Card**

1. Click **Add** to create a personal account.
2. Enter Personal information (\* required)
3. Click **Card** for the card registration
4. Click **Add** to add/scan the Card

5. Select Access Reader
6. Click **Read**
7. Swipe Card, click **OK**
8. Final, click **OK** to finish adding Person.



9. If the data is changed, it will automatically prompt for the data Synchronization. Choose **Apply Now**, or **Apply Later** to postpone.



**LTSKE100ME**  
Plug and Play USB Mifare  
Card Reader

### 3 ways to scan / issue the card.

1. **Access Controller**  
Use Wiegand Reader to Scan
2. **Card Enrollment (LTSKE100ME)**  
Use USB Reader to Scan
3. **Manually input**

## Permission

In the Permission module, you can add, edit, and delete access control permissions, as well as applying the permission settings (data synchronization) for the device permissions to take effect.

1. Go to **Access Control > Permission**

Note: Each door can only support up to 4 permissions in the list

2. Click Add

3. Define **Permission Name**

4. Select **Template**

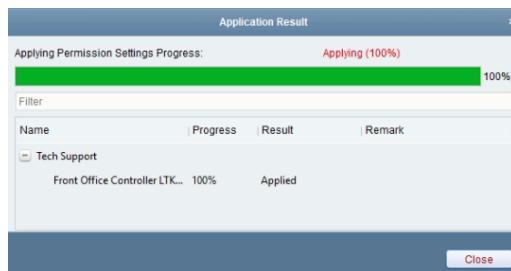
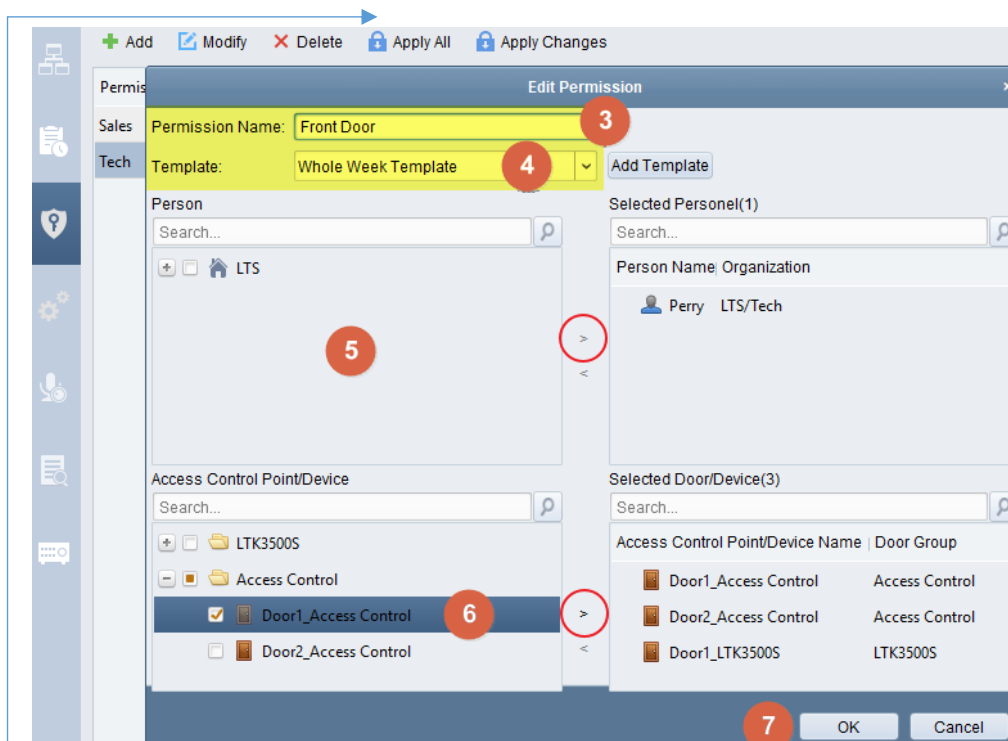
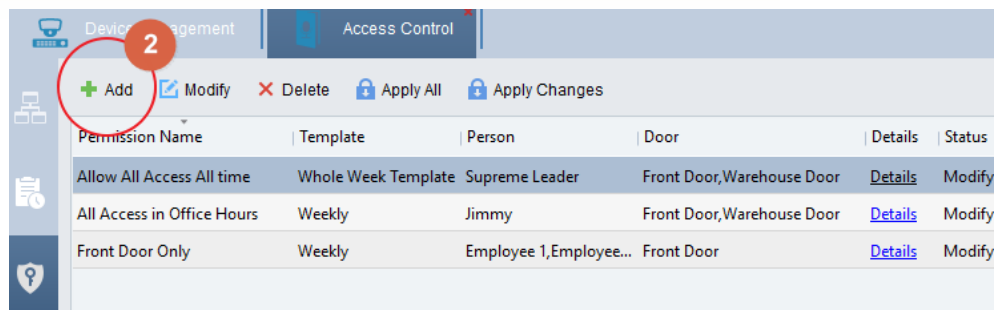
5. Select **User**, click > to add

6. Select **Door**, click > to add

7. Click **OK** to finish.

8. If Data is changed, System will automatically prompt for data synchronization. **Apply Now** or, click **Apply Later** wait until final.

Or, You can find those buttons on the toolbar.

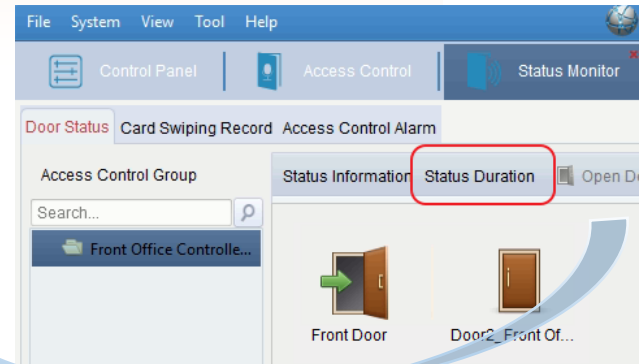




## Status Monitor

**Purpose:** The Status Monitor provides a way to manually control the status (or lock) for all the access control points (doors), including opening door, closing door, remaining open, and remaining closed.

Open Door Close Door Remain Open Remain Closed

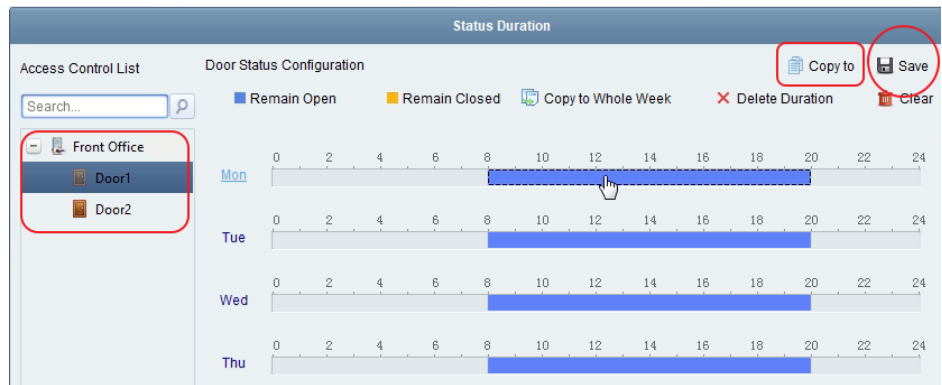


### Status Duration:

**Purpose:**

Status Duration allows you to set an access control point (door) to remain open or remain closed according to a defined schedule.

In the Door Status module, click the Status Duration button to enter the Status Duration interface.



### Card Swiping Record:

The logs of card swiping records of all access control devices will display in real time. You can view the details of the card swiping event, including card No., person name, organization, event time, etc. You can also click the event to view the cardholder details, including person No., person name, organization, phone, contact address, etc.

**Note:** please remembered only one local connection can receive the log. 2<sup>nd</sup> Connect may or may not get the instance.

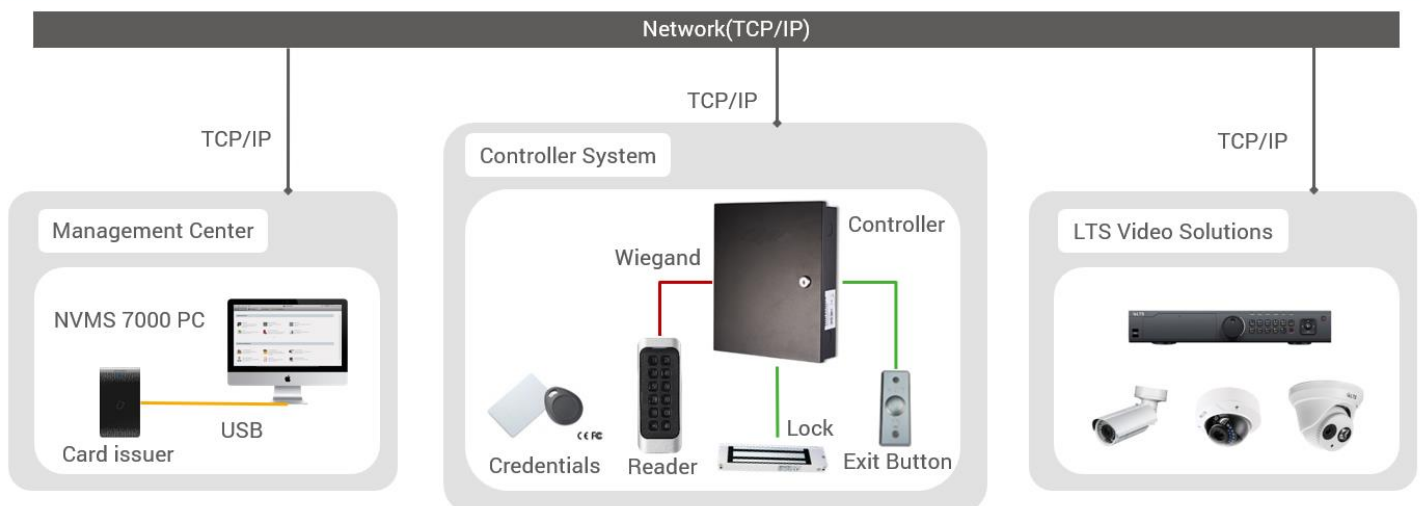
Door Status	Card Swiping Record	Access Control Alarm					
Card No.	Person Name	Organization	Event Time	Door Position	Direction	Authentication ...	C
03859699	Eric Gonzalez	LTS/Sales	2018-03-13 10:3...	Front Office Co...	Enter	Invalid Card	
03859699			2018-03-13 10:3...	Front Office Co...	Enter	Invalid Card	
03859699			2018-03-13 10:3...	Front Office Co...	Enter	Invalid Card	
6264352866	Jimmy	LTS/Tech Support	2018-03-13 10:3...	Front Office Co...	Enter	Legal Card Aut...	
123456			2018-03-13 10:2...	Front Office Co...	Enter	Invalid Card	
123456			2018-03-13 10:2...	Front Office Co...	Enter	Invalid Card	
09425517	Perry Chung	LTS/Tech Support	2018-03-13 10:2...	Front Office Co...	Enter	Legal Card Aut...	
09425517	Perry Chung	LTS/Tech Support	2018-03-13 09:5...	LTK2802:Exit Ca...	Exit	Legal Card Aut...	
09425517	Perry Chung	LTS/Tech Support	2018-03-13 09:5...	LTK2802:Entran...	Enter	Legal Card Aut...	
09425517			2018-03-13 09:5...	LTK2802:Entran...	Enter	Invalid Card	
09425517	Perry Chung	LTS/Tech Support	2018-03-13 09:5...	LTK2802:Entran...	Enter	Invalid Card	
09425517	Perry Chung	LTS/Tech Support	2018-03-13 09:5...	LTK2802:Entran...	Enter	Invalid Card	
09425517	Perry Chung	LTS/Tech Support	2018-03-13 09:4...	LTK2802:Entran...	Enter	Invalid Card	
03859699	patrick	Its	2018-03-12 09:2...	Front Office Co...	Enter	Legal Card Aut...	
03859699	patrick	Its	2018-03-12 09:2...	Front Office Co...	Exit	Legal Card Aut...	
03859699	patrick	Its	2018-03-12 09:2...	Front Office Co...	Enter	Legal Card Aut...	



# Video Verification



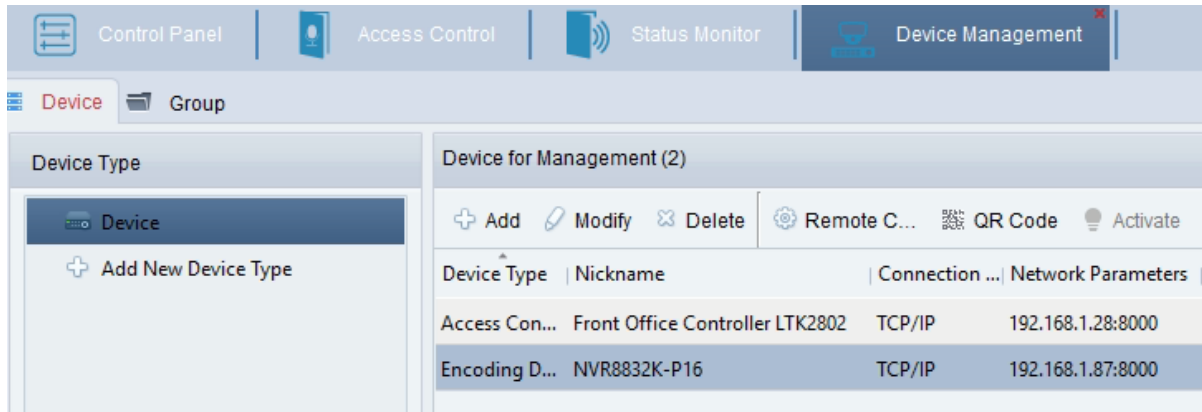
- **Enroll Credentials**
- **Manage Controllers**
- **Video Verification**



## Setup LTS NVR/DVR/IPC in the Device Management first.

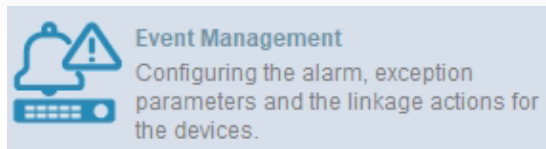
Video verification is only possible once you have a video device configured in Device Management.

The video Device requires storage capability to be able to recall and display a video event that is linked to an access control event.



## Event Management

Link Video Device to the Access Control



Go to **Maintenance and Mangement > Event Management**

Go to **Access Control Event Tab**

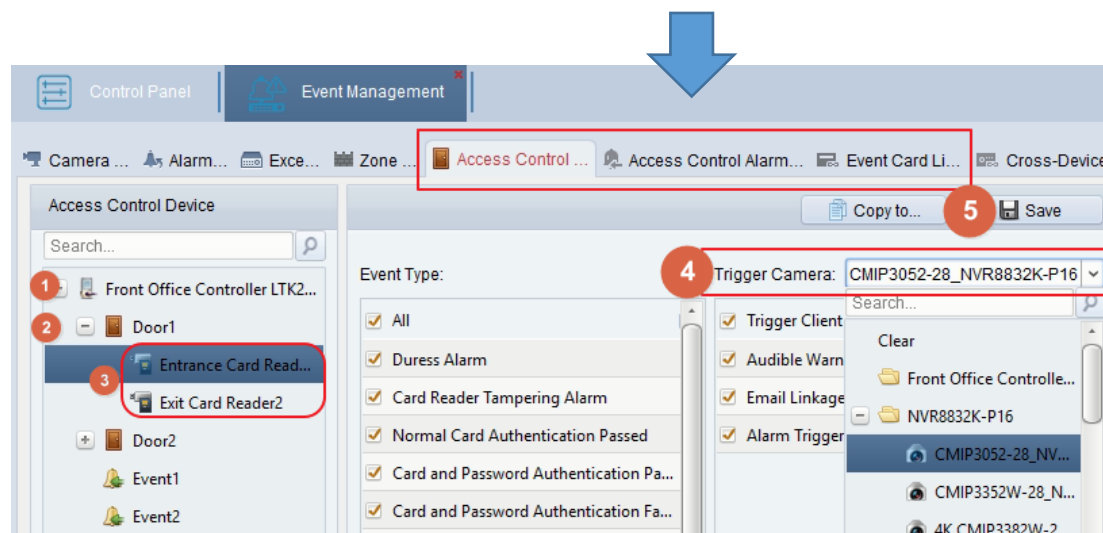
There are 3 tabs that are related to Access Control:

**Access Control Event**   **Access Control Alarm Input**   **Even Card Linkage**

**Access Control Event**

contains three sets of events:

1. Controller
2. Door
3. Reader
  - Link to 1 Channel Video
  - NVR/DVR
  - IPC
  - Doorbell
4. Click the **Save** button to save the settings



Each Video Device must have Recording Enabled. If there is no recording available on the system, you will only see Live View and would not see linked event playback

# Access Control Alarm Input

Purpose: The access control alarm inputs can be linked to several actions (e.g., alarm output, host buzzer) when it is triggered.

## Note:

The linkage here refers to actions performed in the client software NVMS7000 triggering an action on the controller.

**Host Buzzer:** The audible warning of the controller will be triggered.

**Card Reader Buzzer:** The audible warning of the card reader will be triggered.

**Alarm Output:** The alarm output will be triggered for notification.

**Access Control Point (Open/Close):** The door will be open or closed when triggered.

**Note:** The Door cannot be configured as open and closed at the same time.

Click the **Save** button to save the settings

The screenshot shows the 'Event Management' window in the NVMS7000 software. The 'Access Control Alarm' tab is selected. The 'Event' list on the left shows 'Event1' and 'Event2'. The 'Property' pane on the right shows the configuration for the alarm. It includes sections for 'Host Buzzer', 'Card Reader Buzzer', 'Alarm Output', and 'Access Control Point'. Each section has a table of items with 'Disable' and 'Enable' toggle buttons. The 'Host Buzzer' section has a single 'Enable' button. The 'Card Reader Buzzer' section has three rows: 'Entrance Card Reader1', 'Exit Card Reader2', and 'Entrance Card Reader3'. The 'Alarm Output' section has two rows: 'Front Office Contro...' and 'Front Office Contro...'. The 'Access Control Point' section has two rows: 'Door1' and 'Door2'. Each row has 'Open' and 'Close' columns, each with 'Disable' and 'Enable' toggle buttons. A 'Save' button is in the top right corner.

# Event Card Linkage

The Event Card Linkage provides a way for the controller to perform an action (e.g., alarm output, host buzzer, etc.) when a specified event occurs.

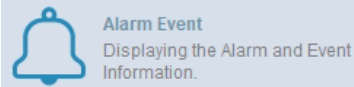
The linkage here refers to an event triggering an action on the Controller.

Click **Add** to enable this feature.

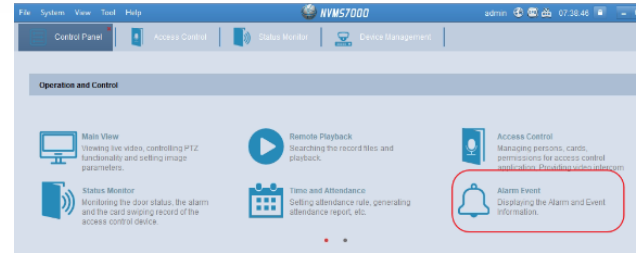
For further explanation and setup for this feature, please refer to Page 86 in the User Manual

The screenshot shows the 'Event Card Linkage' window in the NVMS7000 software. The 'Event Card Linkage' tab is selected. The 'Event Card Linkage' list on the left shows 'Event Linkage\_Door Re...'. The 'Linkage Details' pane on the right shows the configuration for the linkage. It includes sections for 'Event Source', 'Linkage Target', 'Card Reader Buzzer', 'Alarm Output', and 'Access Control Point'. The 'Event Source' section has a dropdown for 'Event Linkage' set to 'Door Event' and a dropdown for 'Door Remaining...' set to 'Door1'. The 'Linkage Target' section has a 'Host Buzzer' section with 'Enable' and 'Disable' toggle buttons, and a 'Capture' section with 'Disable' and 'Enable' toggle buttons. The 'Card Reader Buzzer' section has a table with 'Name', 'Enable', and 'Disable' columns. The 'Alarm Output' section has a table with 'Name', 'Enable', and 'Disable' columns. The 'Access Control Point' section has a table with 'Name', 'Open', 'Close', 'Remain Open', and 'Remain Closed' columns. Each row has 'Di...' and 'En...' toggle buttons. An 'Add' button is in the top right corner.

# Alarm Event / Log Search / Video Live View

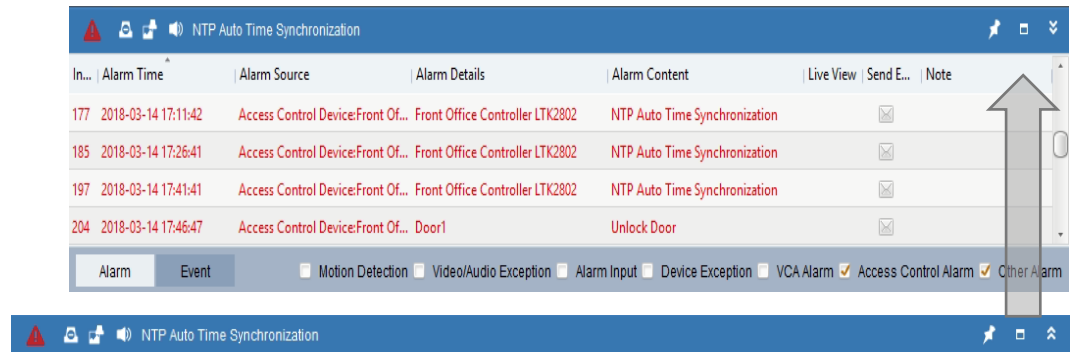


The Alarm Event Module contains the current day's Alarm/Event entries.




There are two ways to open it.

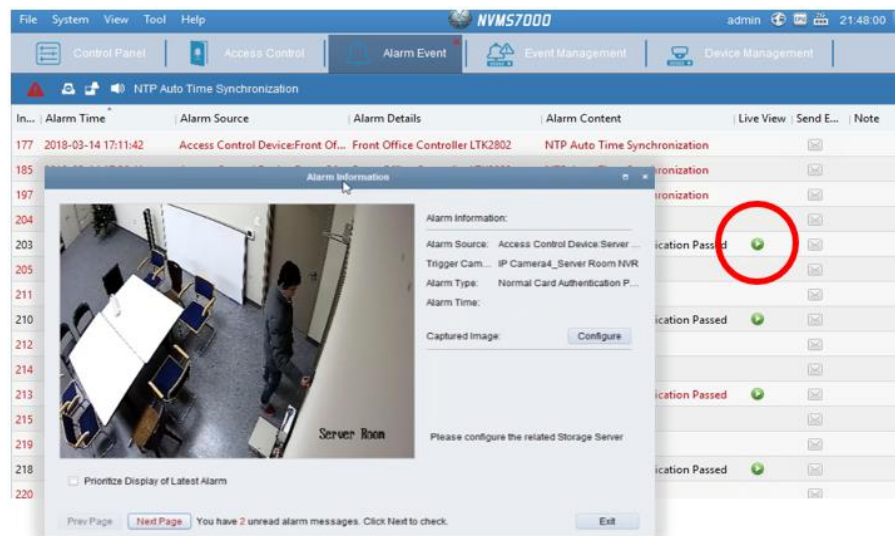
1. From the bottom panel.  
(Displays only several entries)



2. Or, **Control Panel > Alarm Event** to open it. (Open in full window)

Click the  to bring up the Live view video.

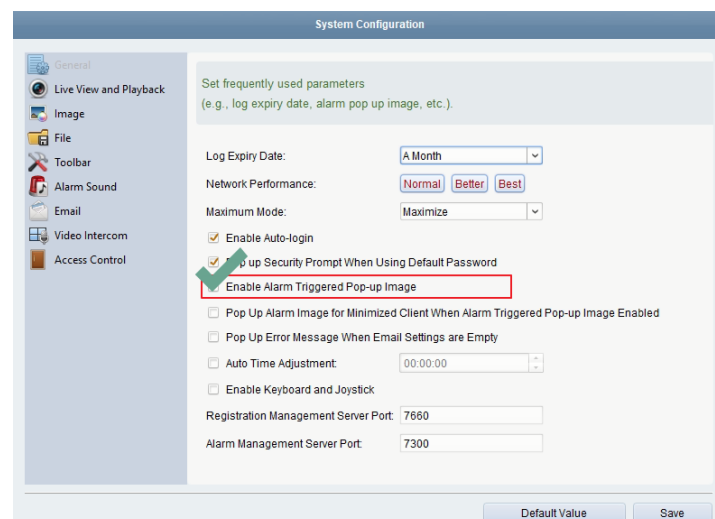
**Tip:**  
If there seems to be an excess in NTP Auto Time Synchronization entries, The NTP Sync time can be adjusted to lower how often the time is synced with the NTP server. We recommend this setting to be set to 1440 to have the controller sync the time once per day (Refer to Page 10 of this document).



## Tip: Automatic Popup Alarm Notification Window

To set the Alarm Notification window to automatically pop up in the NVMS7000 when a linked event is triggered:

Goto to **Control Panel > System Configuration > General**, checkmark **Enable Alarm Triggered Pop-up Image**

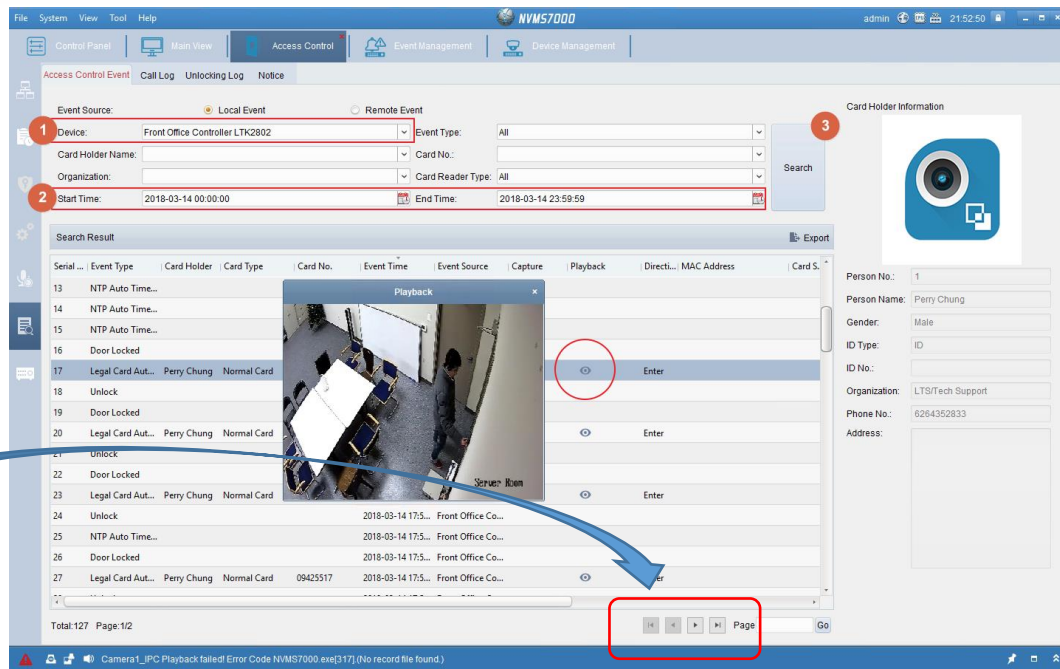


# Alarm Event / Log Search / Video Playback

Go to **Access Control > Log Search**

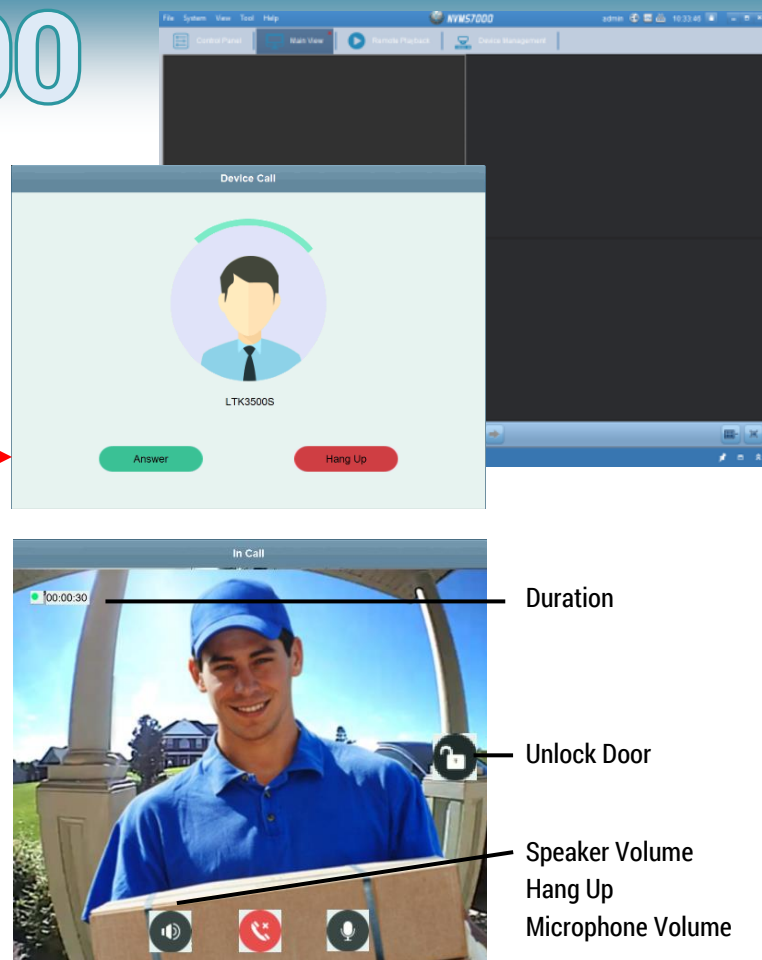
1. Select **Device**
2. Set **Start Time & End Time**.
3. Click **Search**
4. If you see the Playback icon available, you can click the icon to playback the linked video footage.

**Note:**  
If your NVMS7000 window size is less than 1440x900. The scrollbar on the bottom of the window needs to be moved to the right in order to see the Playback Column.



## PC-NVMS7000

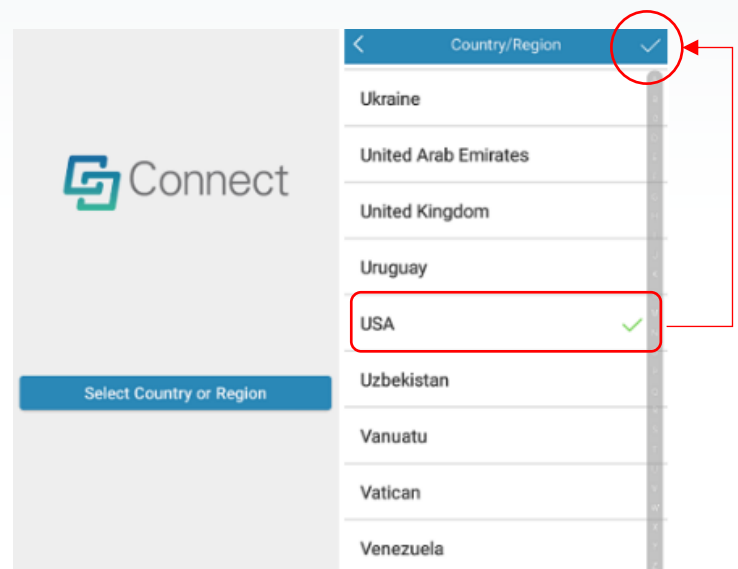
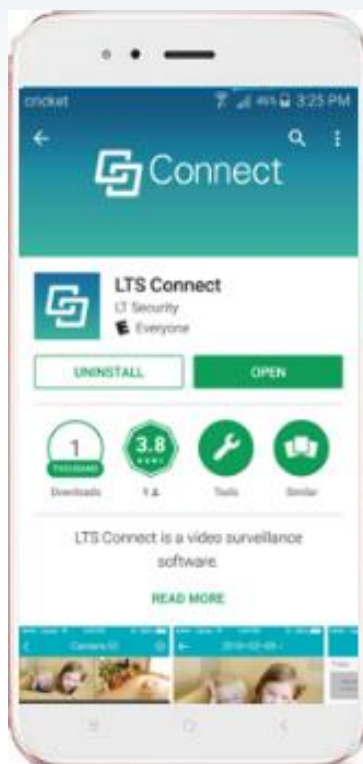
### LTK3500S Video Calling



# LTS-Connect



Mobile App: LTS-Connect (Google / Apple)

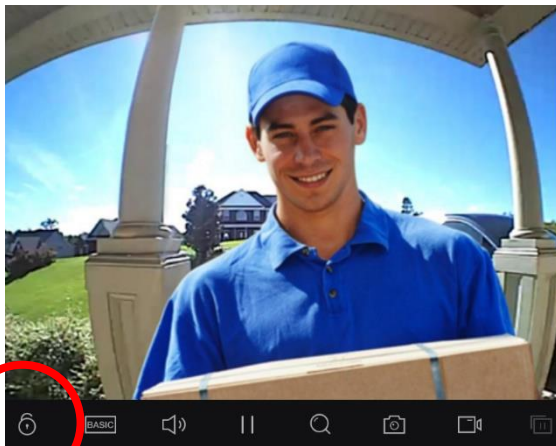
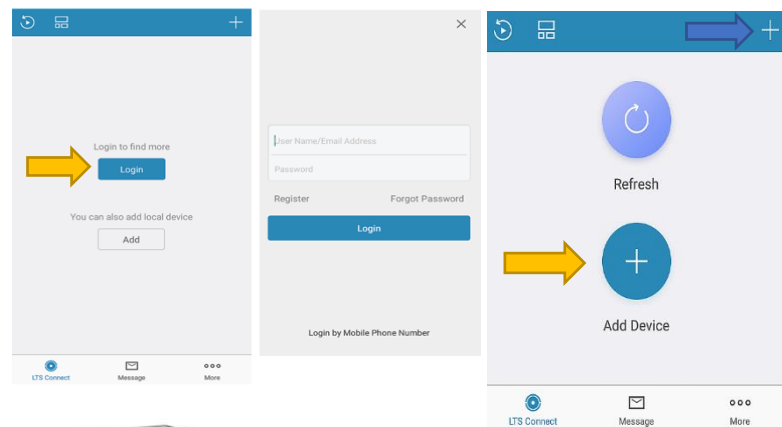




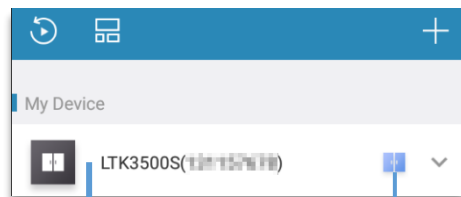
# LTS-Connect

1. Download the **LTS-Connect App**.
2. Click the 'Select Country or Region' button and set to USA .
3. Click the Login button (the top login button)
4. Enter your login info and password. Click Login  
If you don't have an account, please register one first.  
Recommend using an Email address to register an account.
5. Click (+) to Add the device. (or, use the top right +)
6. After Scanning the QR code (see Page 1) and click Add to finish.
7. Press the Call LTS-Connect button to test. (the Bell Button).

**Note: LTK3500S does not support account sharing due to security reasons.**



After successful login to the LTK3500S, click the device in PT-Cloud. Click the LTK3500S device. Tapping on the lock icon brings up a password prompt for unlocking the door. For the first time using the unlock feature, the LTK3500S will require you to create a new password for unlocking (default is the verification code). To change the password after it's been set, go into the settings of the LTK2500S.



Tapping on the Door icon will access the log info.  
Tapping on the Gear icon will access the Settings.  
For all other functions, please check the LTS-Connect Quick Guide.

