

Control4 Driver Setup



Welcome to choose LTS Product.

Here is the instruction for your Control4 Driver settings.

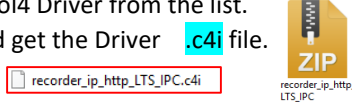
1. Please download the Control4 Driver from the LTS website.

Go to www.ltsecurityinc.com

Company -> Partner -> Control4

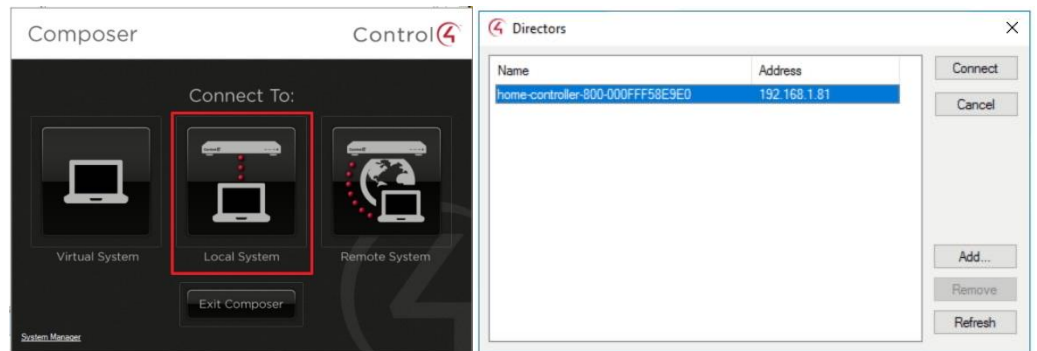
Or, here is the download [LINK](#)

2. Download the Control4 Driver from the list. Unzip it. You should get the Driver **.c4i** file. We need it later.

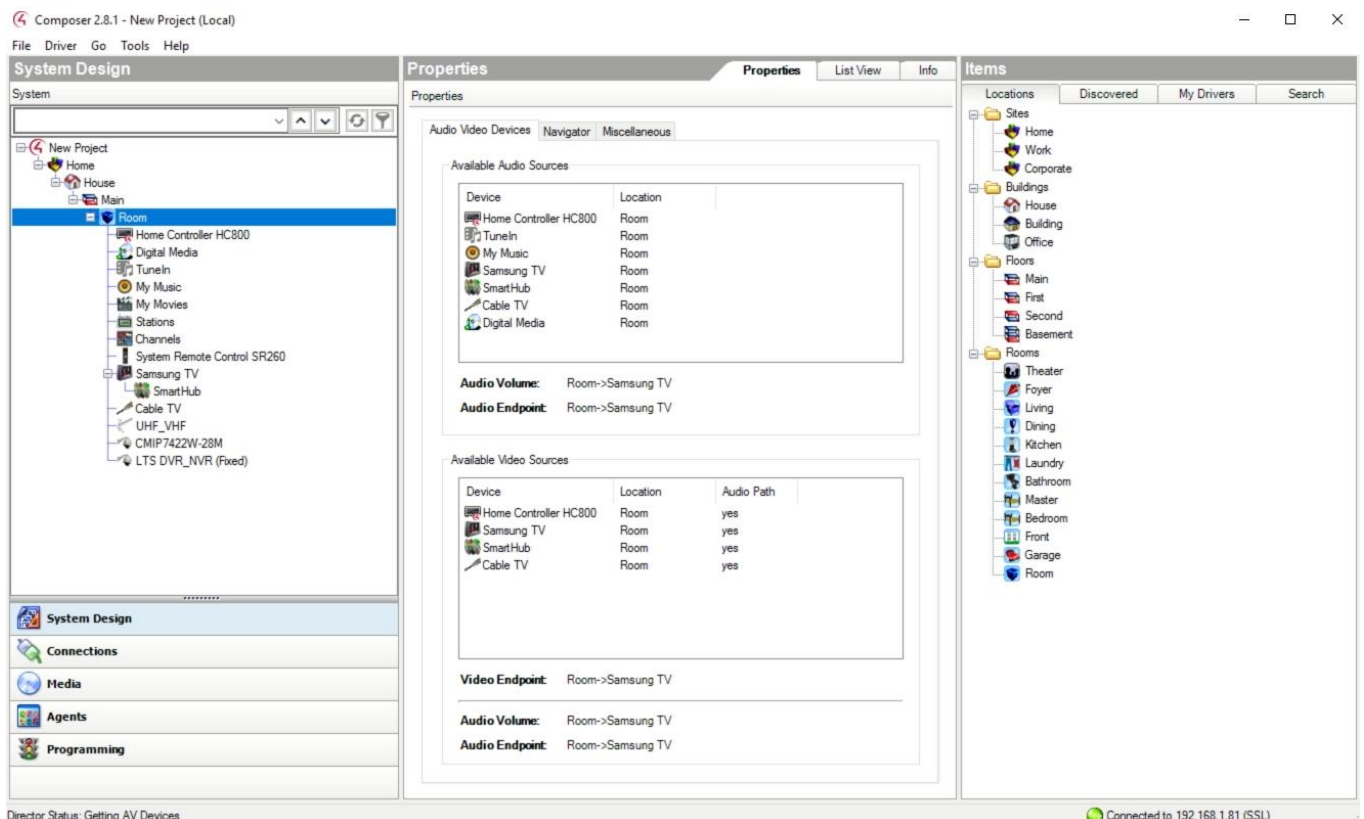


3. Now, run Control4 composer and we are ready to program it.

Select Local System and Choose the EA controller & **Connect**.

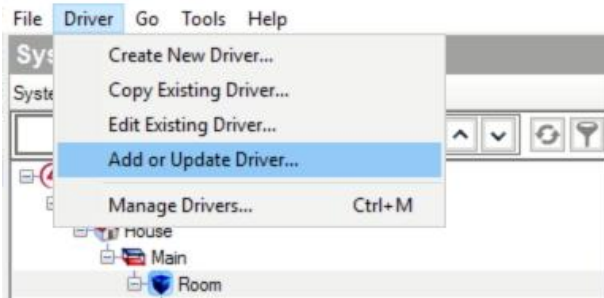


4. Here is the Composer Looks like

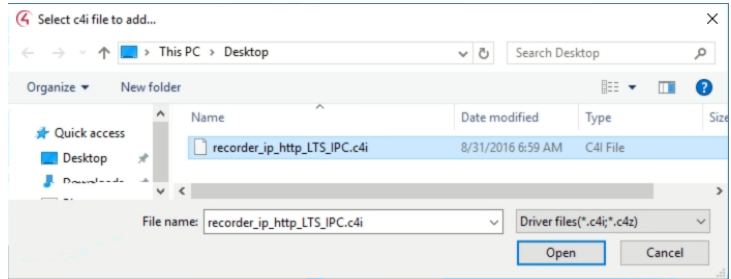


5. Load the driver first. Go to Driver, and choose Add or Update Driver...

recorder_ip_http_LTS_IPC.c4i



Then, select the driver, if you already loaded, overwrite again.

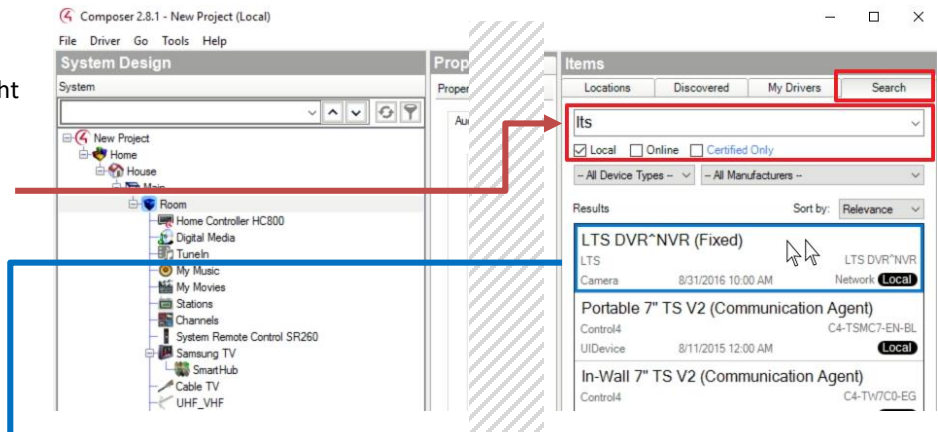


6. Then, we are ready to add the driver.
Choose **Room** from the design.
Go to item Search Tab from the right

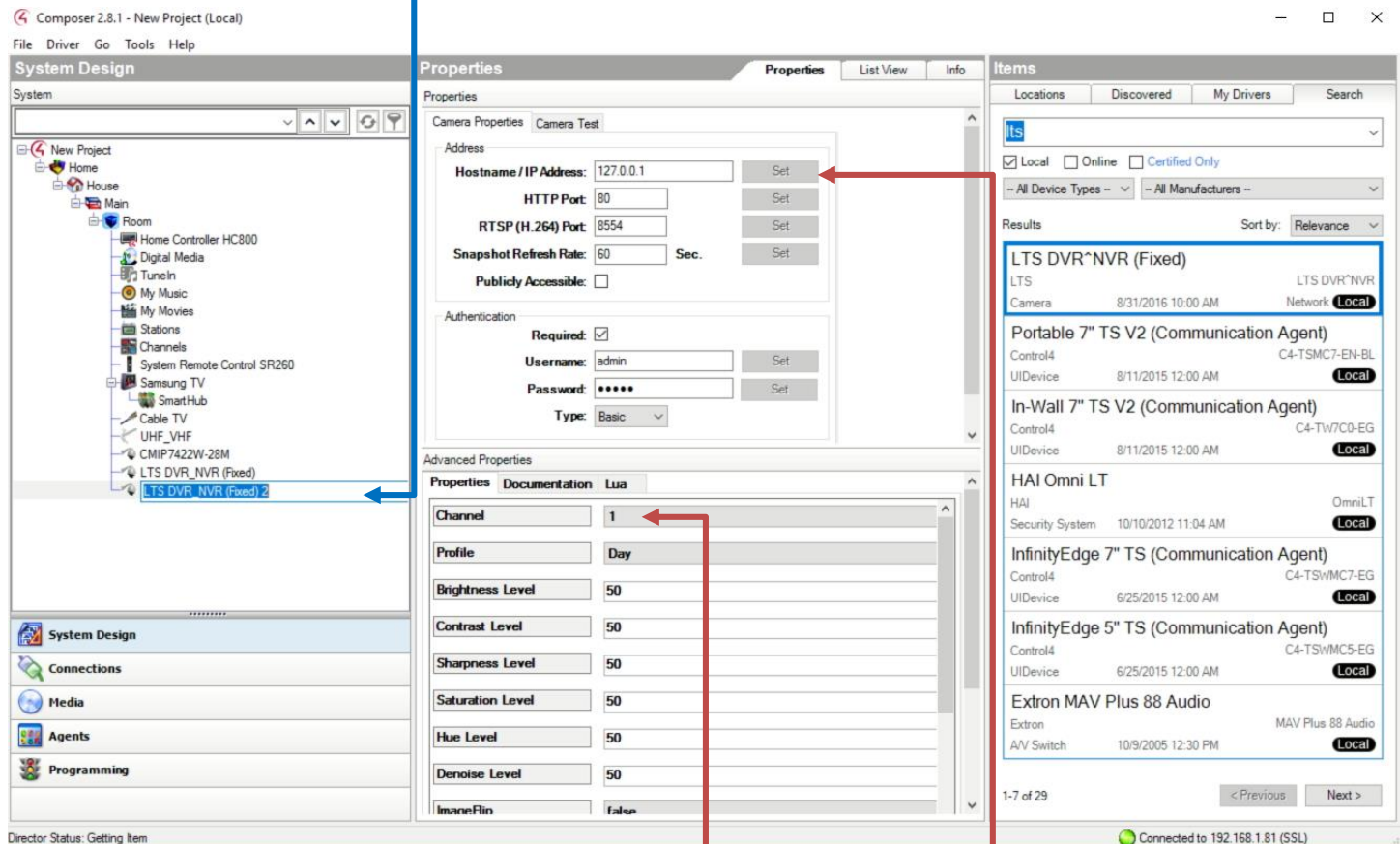
Remove ☒ Online, and type
LTS in the search. <enter>

Double-click the item to add

Or, you can go Discovered to add it.
(check Control4 KB for IT)



7. This is how it looks like.



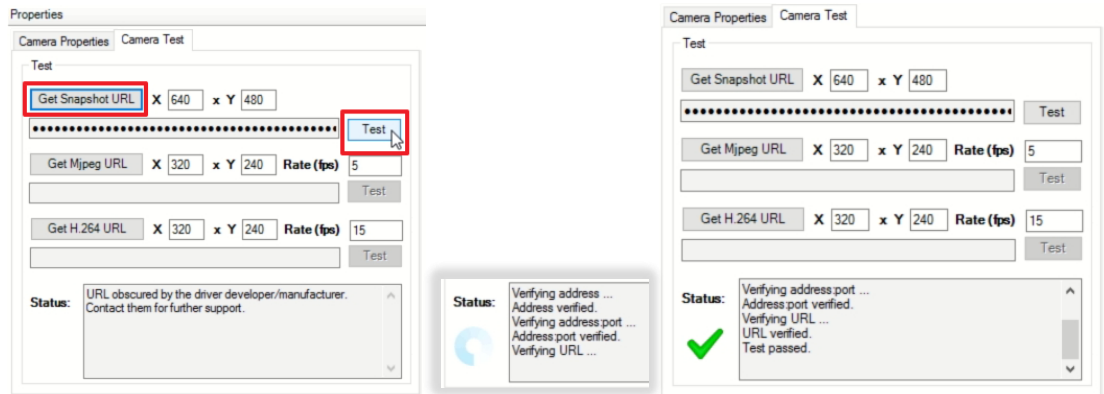
8. You need to program the properties. For example, IP address and Username & Password

9. And, specify the Channel number (if it is the NVR)

10. Click **Camera Test** to make a test

Click **Get Snapshot URL, Test**

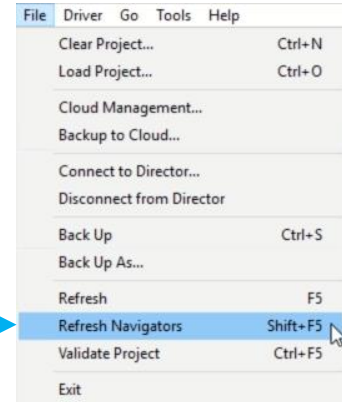
If it went thru, there should be a green check mark.



Don't forget backup and refresh the Navigator when finish

Congratulation, you are just complete the setting.

For more information, please check KB – Control4 Driver (IT)



Go to Control 4 Monitor Screen, Select Security and View it.



In-Wall Touch Screens



Tabletop Touch Screens



Control4 App

