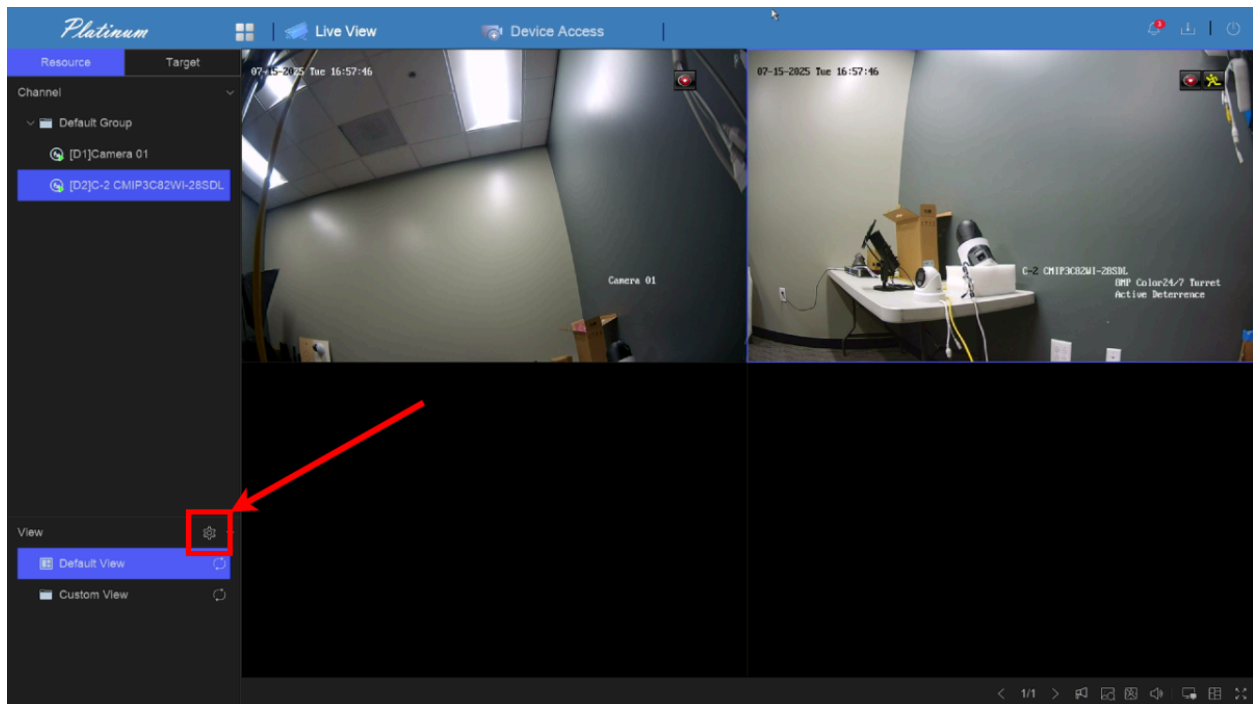


Adjusting Live View

| | |
|---------|------------------------|
| Created | @July 16, 2025 2:21 PM |
| Tags | Live View |

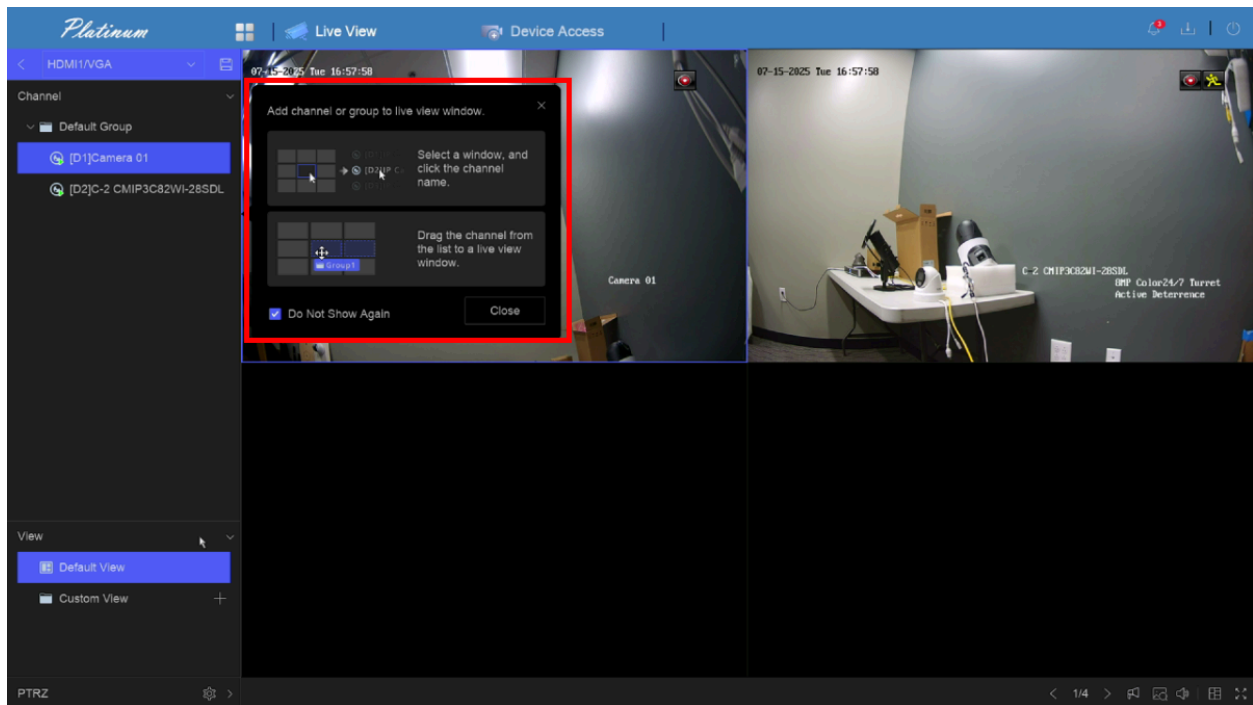
Step 1

To adjust views in the new 5.0 interface, first be on the live view page. In the bottom left, click on the gear icon to the right of "View".



Step 2

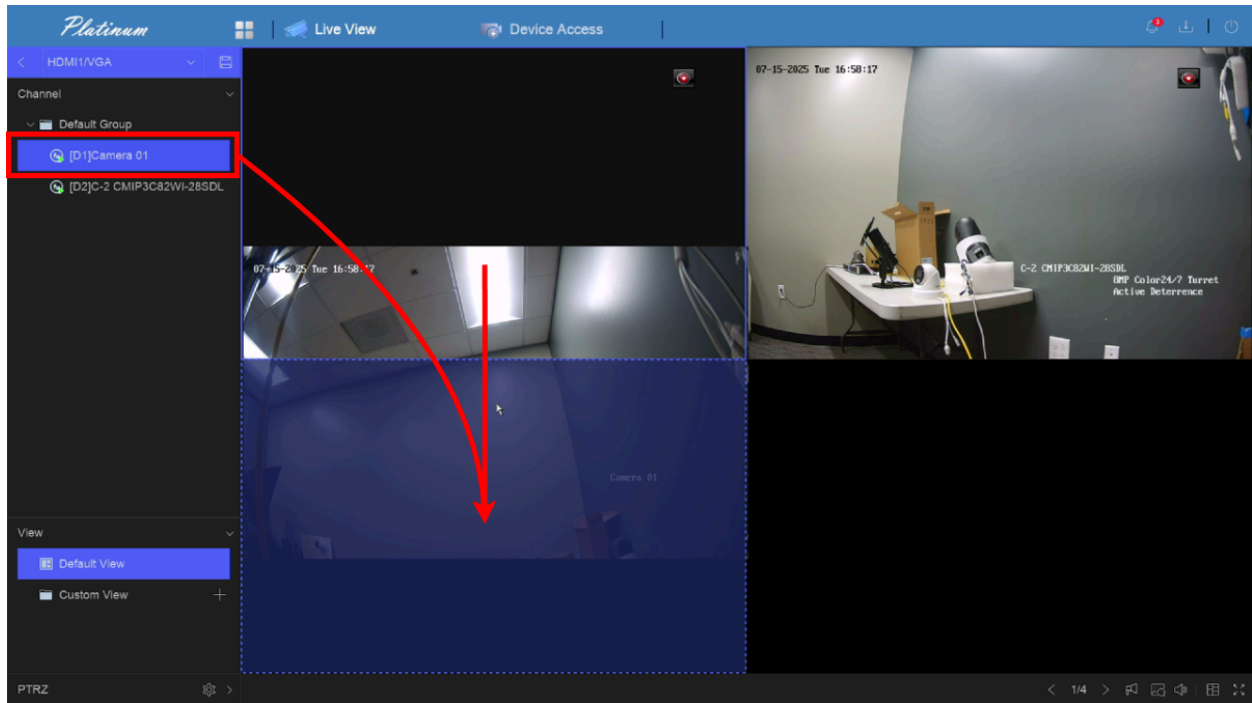
If it is the first time this is to be done, a window will appear giving some basic instructions on how to rearrange or add in channels into the live view.



Step 3

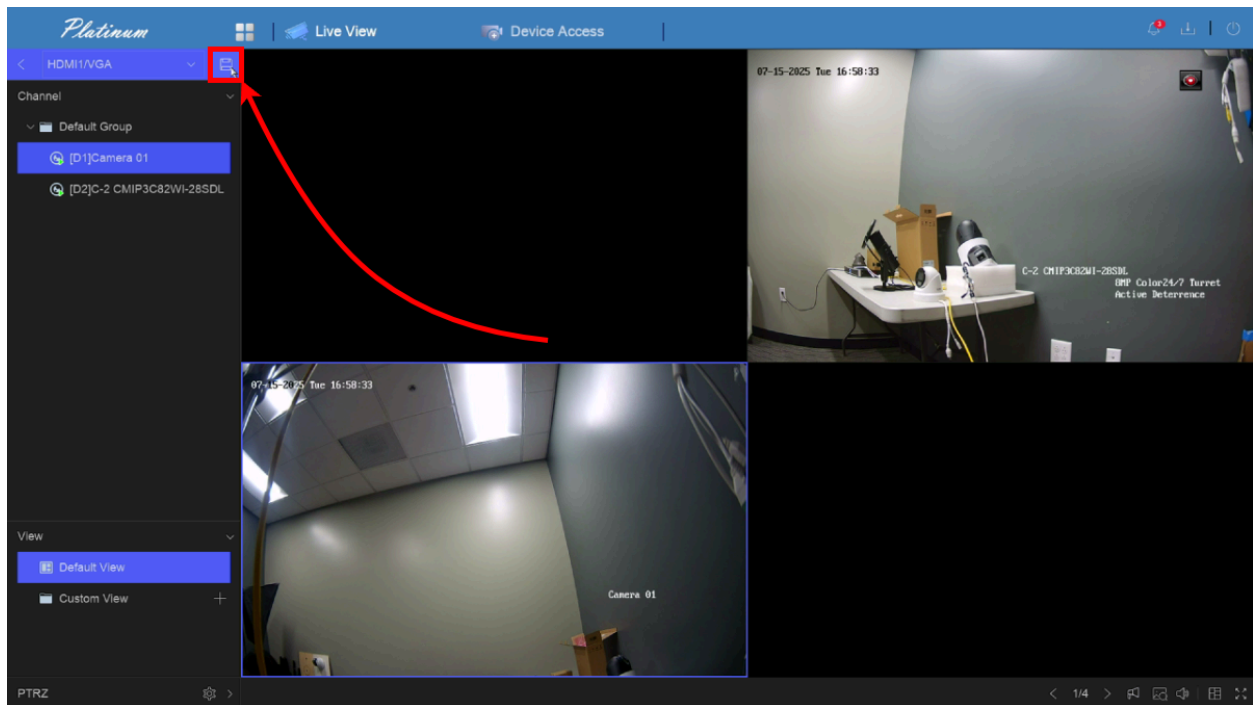
There are 2 options when configuring.

1. Click and drag from the channel list on the left side of the screen.
2. Click and drag any existing views on the live view.



Step 4

After the view has been adjusted to what is desired, click on the save icon in the top left.



A confirmation of the save will occur if everything goes correctly.

